

2317/6 Kingsborough Way Zetland NSW

2  2  1 

Your new Bourke Street address is an epicentre of comfort and convenience. Sheltered from road noise, this quiet unit is nestled amongst charming heritage-style terraces on tree-lined streets.

Easy commute from Green Square Station with only 1 stop to the city or 2 stops to the airport. Bustling Circular Quay is less than five kilometres from your front door. Likewise, Surry Hills, Centennial Park and Zetland's East Village are all within footsteps of your new home. Some of Sydney's top schools and universities are also situated nearby, perfect for growing families.

Property Features:

[For full version visit the website](https://www.recoproperty.com.au)

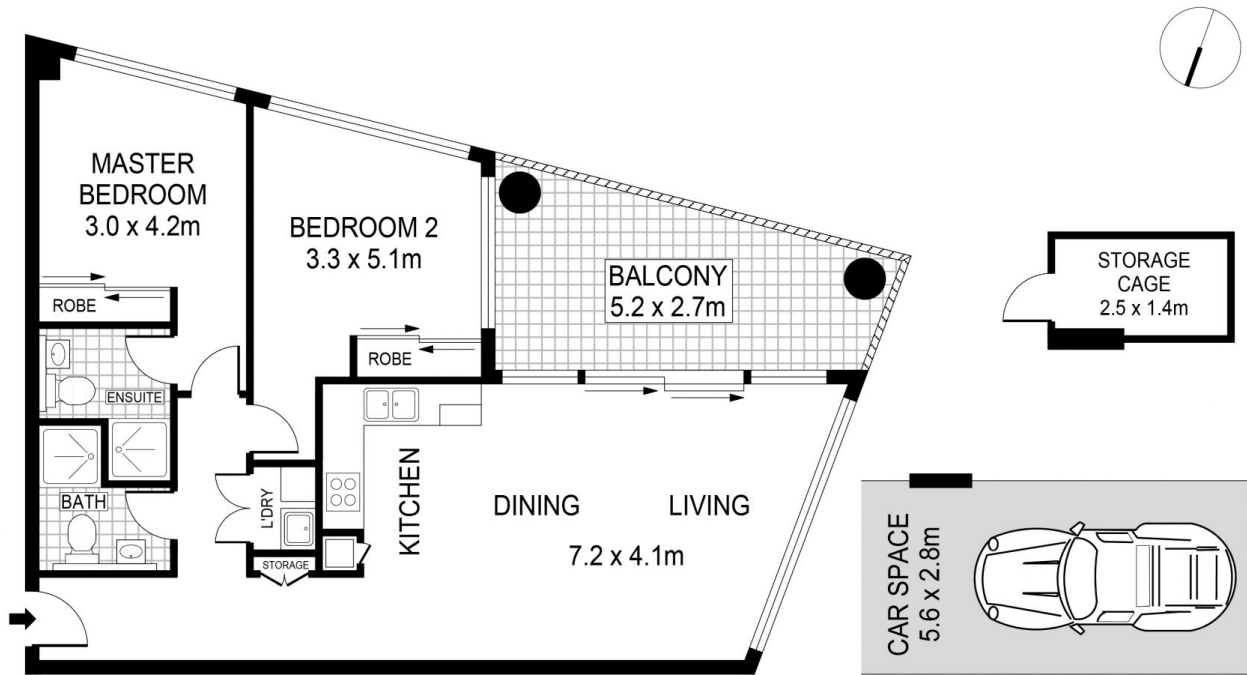
Type : Apartment
View : <https://www.recoproperty.com.au/7705466>



Junianto Junianto
 02 8357 3377



Anna Le
 02 8357 3377



LEVEL THREE



INTERNAL : 69sqm (approx)



This floor plan is for marketing purposes and is to be used as a guide only. All efforts have been made to ensure its accuracy although interested parties are urged to rely on their own enquiries.