




1306/6A Atkinson Street Liverpool NSW

2  2  1 

This massive two bedroom apartment located in the exclusive and historical Landmark complex of The Paper Mill by Coronation. The interiors boast clean lines and substantial proportions, its style is pristine and functional complete with quality appointments & thoughtful extras.

Located within walking distance to the Georges river precinct, Liverpool station, the fashionable Paper Mill Restaurant and a variety of lifestyle options. This apartment is the perfect option for first home buyer or investors.

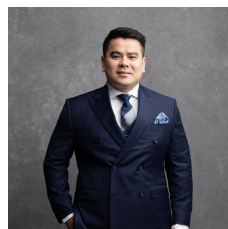
Property Features :

- Timber floorboard on living and dining area
- Air con in Living room
- Massive stylish kitchen with modern appliances

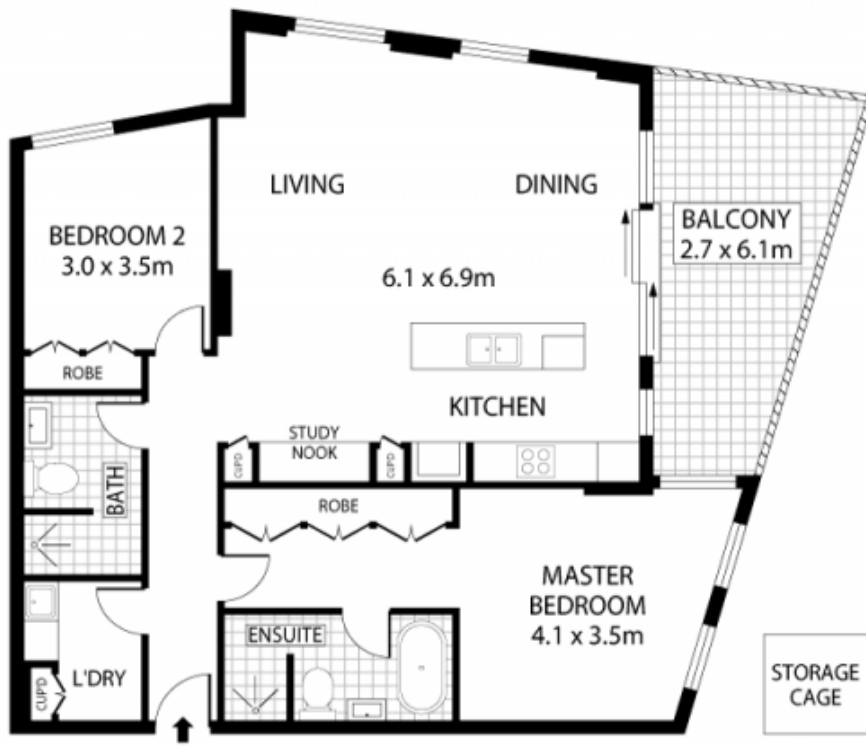
[For full version visit the website](#)

Type : Apartment

View : <https://www.recoproperty.com.au/7705488>



Junianto Junianto
02 8357 3377



LEVEL THIRTEEN



This floor plan is for marketing purposes and is to be used as a guide only. All efforts have been made to ensure its accuracy although interested parties are urged to rely on their own enquiries.