






### 503A/264 Anzac Parade KENSINGTON NSW

2  2  1 

A luxurious residential split level apartment, Capella is a landmark building and one of Kensington's most recognised buildings. Flowing over two levels on the top floor and finished to the highest of standards with superb ultra-contemporary appointments throughout, surrounded by sunny landscaped gardens with a heated 25M lap pool offering the ultimate in resort-style urban living that is little more than a short stroll to the University of New South Wales and the swopping grounds of Centennial Park.

**Type** : Apartment

**View** : <https://www.recoproperty.com.au/7705505>

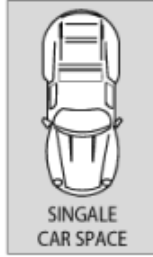


#### Property Features :

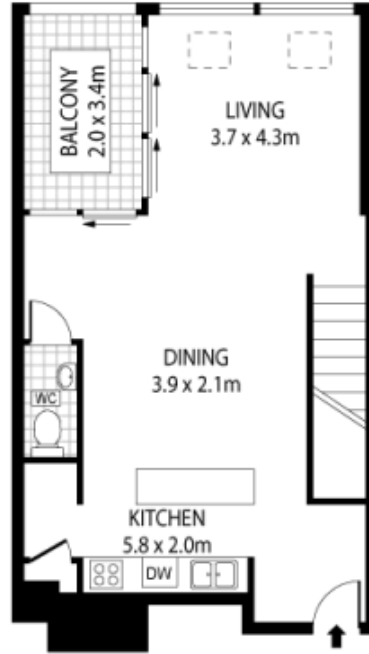
- Downstairs 2 bedrooms all with built-in robes, main bedroom with an ensuite
- Open plan living and dining area leading to an enclosed

**Mascot Partners Realty**  
**+61 2 8357 3377**

[For full version visit the website](#)



LEVEL FOUR



LEVEL FIVE



This floor plan is for marketing purposes and is to be used as a guide only. All efforts have been made to ensure its accuracy although interested parties are urged to rely on their own enquiries.