






211/15 Charles Street CANTERBURY NSW

2  2  1 

This 2 bedroom apartment is positioned in the vibrant heart of Canterbury, this sleek stylish near new apartment Situated on the 2nd floor offers an abundance of natural light.

You are sitting in a prime location with only a stroll to Canterbury Station/Plaza, Canterbury Ice rink & pool, park lands, schools and public transport, great opportunity to capitalize on the future growth in this upcoming suburb.

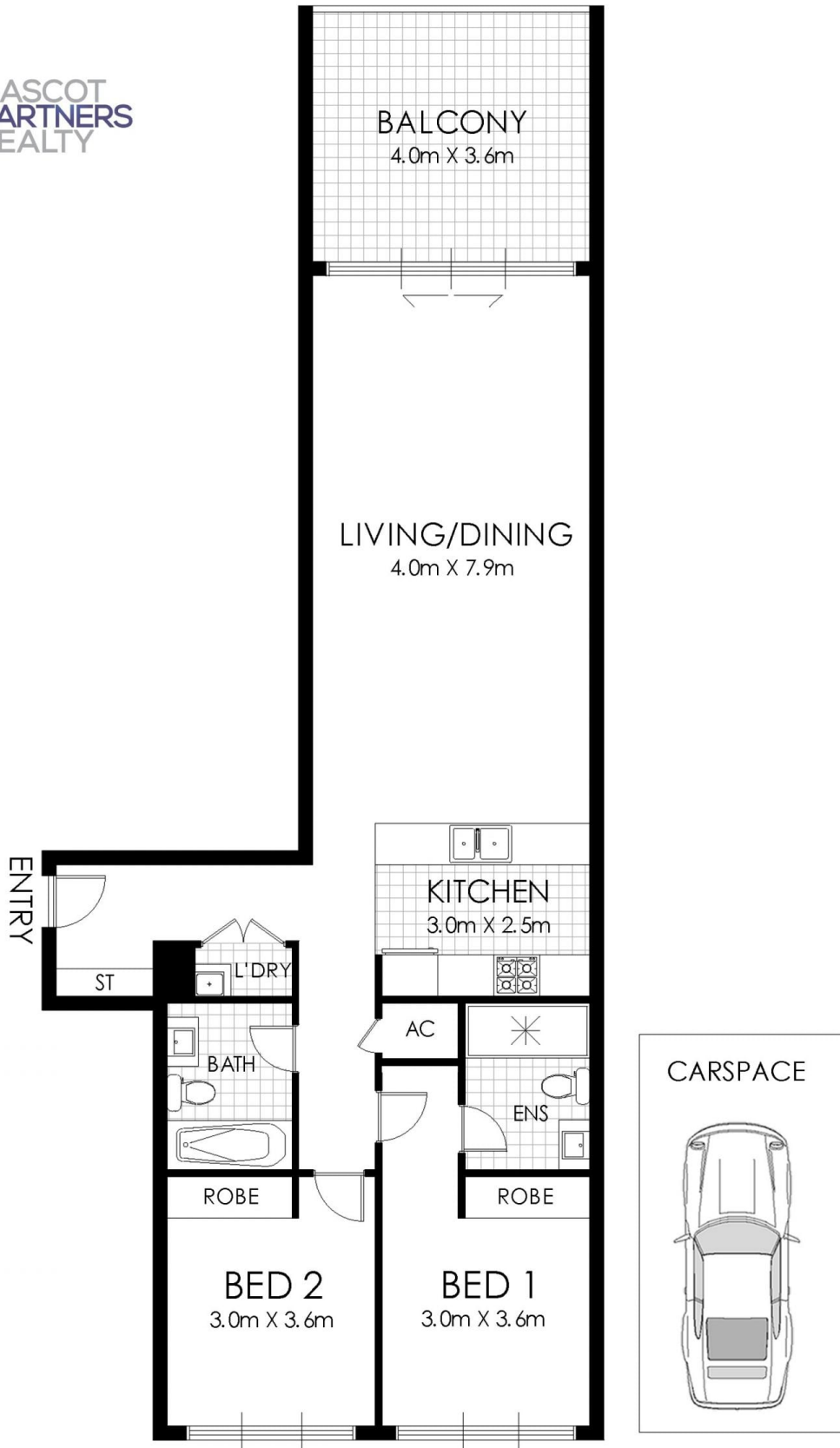
Type : Apartment
View : <https://www.recoproperty.com.au/7705516>



North East facing.
Bright and airy open plan living and dining area with tiled flooring on living and timber on bedrooms.
Stylish and modern designed gas kitchen with granite

Mascot Partners Realty
+61 2 8357 3377

[For full version visit the website](#)



FLOOR PLAN



 2  2  1

211/15 Charles Street, Canterbury

WARNING: DISCLAIMER This information is not to be relied upon. It is strictly used for marketing and illustration purposes only. All measurements are approximate. Not to scale. No liability accepted. You must rely on your own inquiries and seek advice from your solicitor. Floor plan by cnkplan@cnkplan.com.au / www.cnkplan.com.au