



**311/17 Chisholm Street Wollri Creek NSW**

1  1  1 

This luxury one bedroom apartment is located within the heart of Wollri Creek offering ultimate in comfort and luxury experience.

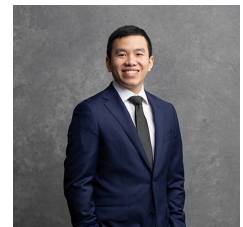
Conveniently located just a short walk to Wollri Creek Train station, major supermarkets such as Woolworths and Aldi, eateries and cafes. With easy access to CBD (only 15mins train ride) and Domestic/International Airports.

- This one bedroom apartment offers:
- A/C in Living Room and Bedroom
  - Spacious Living Room & Sunny Room
  - Built in wardrobes
  - Internal Laundry with wash tub and dryer

**Type** : Apartment  
**View** : <https://www.recoproperty.com.au/7705583>

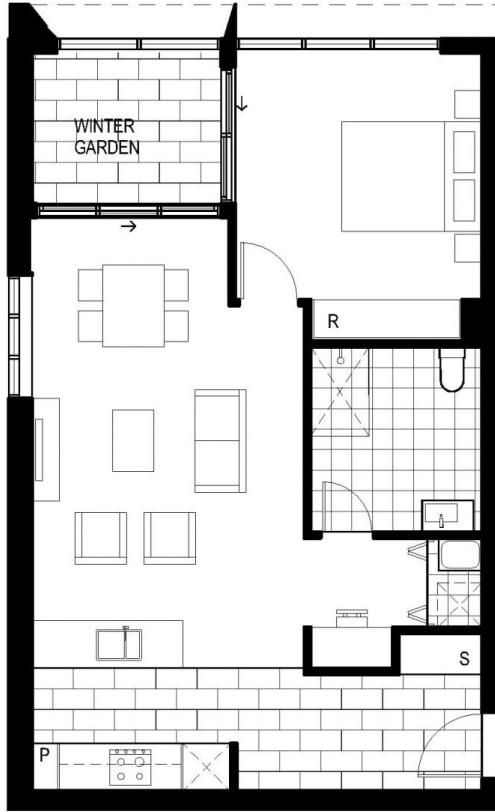


**Junianto Junianto**  
**02 8357 3377**



**Reinard Surya**  
**02 8357 3377**

[For full version visit the website](https://www.recoproperty.com.au)



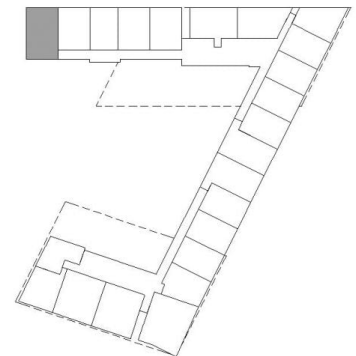
**MARQ**

**APARTMENT:** 311  
**LEVEL:** 3  
**TYPE:** 1 BED, 1 BATH (ADAPTABLE)  
**UNIT AREA:** ( sq.m )  
**INTERNAL:** 63 m<sup>2</sup>  
**BALCONY:** 6 m<sup>2</sup>  
**TOTAL:** 69 m<sup>2</sup>

**SHEET NUMBER:** 3.11 C      **REVISION:** F



KEY PLAN



- LEGEND:  
 C - CUPBOARDS  
 P - PANTRY  
 R - ROBE  
 S - STORAGE  
 AC - AIR CONDITIONING UNIT  
 - - - - BUILDING/AWNING OVER  
 SKYLIGHT OVER

DISCLAIMER: Please note that the layout plan was produced prior to construction. The information is believed to be correct but is not guaranteed. Changes may be made during construction and dimensions, areas, fittings, finishes and specification are subject to change without notice in accordance with the provisions of the contract for sale. The furniture and furnishings depicted are not included with any sale and purchases must refer to their contact for sale for the list of inclusions. The position of the furniture and furnishings should not be taken to be indicative of final positions of power points, tv connection points and the like. Prospective purchases must reply on their own enquiries. All graphics including tile layout and balustrades and the like are indicative only. NBN units and bulkheads for services not depicted.