



308/9 Crystal Street WATERLOO NSW

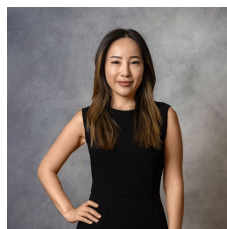
2  2  1 

This two bedroom apartment is located on level 5 in the Tiara building with a number of amenities conveniently located: Walking distance to Coles supermarket, chemist and various restaurants and cafes. The city bus and rail transport and in close proximity to Sydney CBD.

Type : Unit
View : <https://www.recoproperty.com.au/7705679>

Property feature:

- Open plan living/dining area with tiles flooring throughout
- Gas cooking and dishwasher
- Spacious main bathroom with separate bath & shower
- Spacious balcony area
- Secure car space
- Internal laundry



Boa Lee
 02 8537 3377



Ammon Meng
 02 8357 3377

[For full version visit the website](https://www.recoproperty.com.au)