



### **New Road Jimboomba QLD**

Located in the heart of Jimboomba, Elridge is a carefully crafted community that brings together the best of rural tranquillity and city convenience.

Nestled in a quiet corner on Green Ridge Road, the 157-lot community is designed to be an oasis for those looking for a peaceful escape from the hustle and bustle.

Elridge is designed to consider a range of elements and environmental factors. Featuring an abundance of preserved open space with a dedicated nature corridor perfect for wildlife movements.

An idyllic retreat for those looking to settle in a natural, close-knit community. Elridge is surrounded by a sea of green and provides an opportunity for an enviable lifestyle.

A place where you can enjoy a quiet, family-oriented lifestyle embedded within tranquil surroundings. With only a short walk or drive from shopping centres, schools, parks and café's, Elridge offers easy access to all the facilities you need for everyday life.

[For full version visit the website](https://www.recoproperty.com.au)

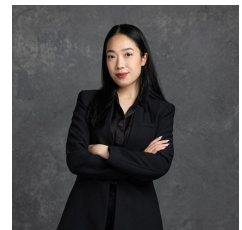
**Type** : House

**Price** : Start from \$629,980

**View** : <https://www.recoproperty.com.au/7767793>



**Junianto Junianto**  
02 8357 3377



**Kaylee Ho**  
02 8357 3377