



Brun Street Redbank Plains QLD

Family friendly and idyllically set just 40 minutes from Brisbane CBD and under 20 minutes to Ipswich, 103 Willow Road Estate unveils an alluring choice for those seeking perfected living. Embraced by parklands and enjoying quick highway access to Brisbane, this is the perfect destination to frame your future memories.

An abundance of schools and shops are located close by offering the convenience of family living all within walking distance. Town Square Redbank Plains Shopping Centre is a local shopping destination built with state of the art cafes, restaurants and speciality stores. The shopping centre is only a quick 3 minute drive from the estate or short 15 minute stroll. Enjoy an impressive dining experience with a selection of new restaurants and cafes.

The centre also includes Coles, Woolworths, ALDI, Target and Australia Post for all your shopping needs.

The stunning Brookwater Golf Course designed by Greg Norman lives up to its reputation and offers a magnificent course and a unique dining experience overlooking the luscious surrounds. Make your weekend a memorable experience and invite

[For full version visit the website](https://www.recoproperty.com.au/7767795)

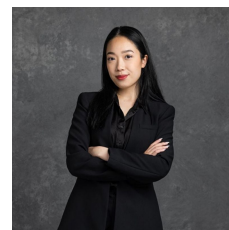
Type : House

Price : Start from \$645,980

View : <https://www.recoproperty.com.au/7767795>



Junianto Junianto
02 8357 3377



Kaylee Ho
02 8357 3377