



Princeton Place Collingwood Park QLD

Peace, quiet and lush natural bushland, infused into the unique lifestyle of residential living in Collingwood Park. Six Mile Creek Estate reinvigorates the meaning of 'opportunity'.

Six Mile Creek Estate breaks free from conventional suburban living, offering a close community that breathes life from its natural bushland surrounds and thriving township. You'll get the best of suburbia, while being tucked away from the usual hustle and bustle.

With close access to the M7 on and off ramps, servicing Brisbane and Ipswich - several regular Translink bus services and a short drive to Redbank's train station, residents will find that Six Mile Creek Estate blends lifestyle and convenience seamlessly. Each home is also positioned close to schools, shopping, medical centres and leisure facilities- all within a 5-minute drive.

[For full version visit the website](https://www.recoproperty.com.au)

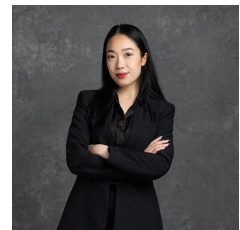
Type : House

Price : Start from \$660,980

View : <https://www.recoproperty.com.au/7777029>



Junianto Junianto
02 8357 3377



Kaylee Ho
02 8357 3377