



106/3 Madden Close Botany NSW



This spacious one-bedroom plus study apartment, situated in the Pemberton On The Park development, stands out among its counterparts. Boasting contemporary interiors and a generously designed layout, this elegant apartment exemplifies luxurious executive living. Tucked away in a tranquil and private enclave, it delivers a convenient village lifestyle, with a variety of cafes and shops just a few steps from the entrance.

Key features include:

- A generously sized bedroom with mirrored built-in wardrobes
- Additional spacious study space

[For full version visit the website](https://www.recoproperty.com.au)

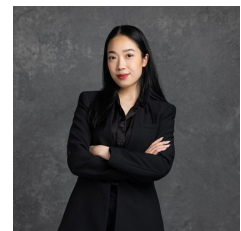
Type : Apartment

Price : \$ 635,000

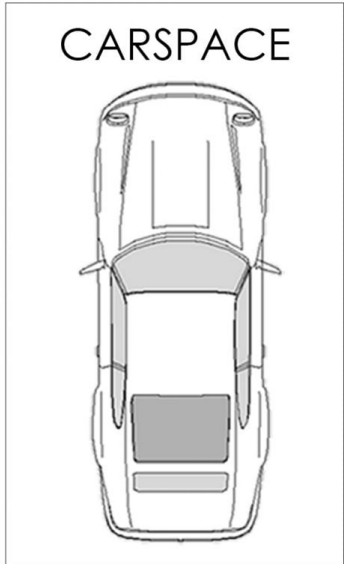
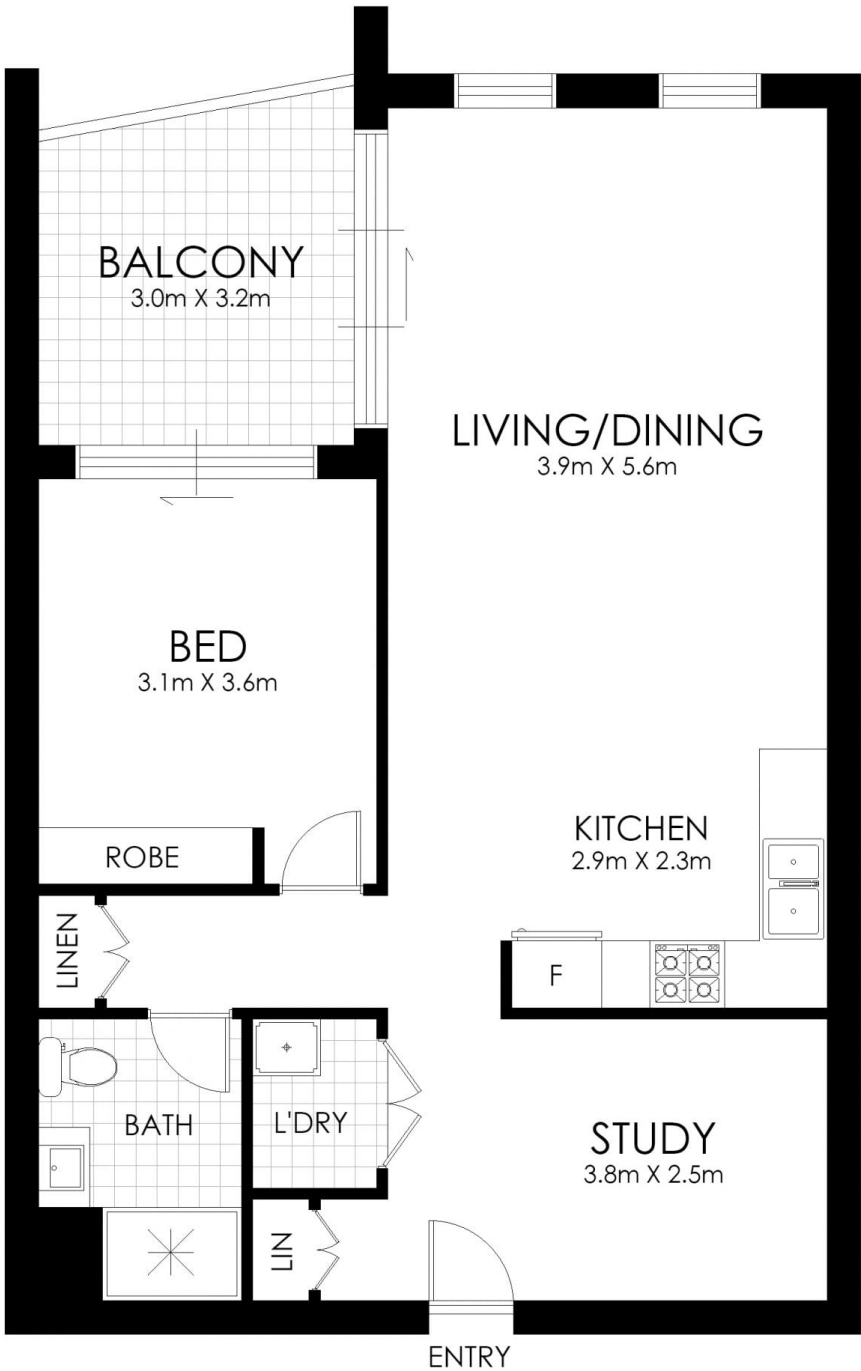
View : <https://www.recoproperty.com.au/7835897>



Junianto Junianto
02 8357 3377



Kaylee Ho
02 8357 3377



FLOOR PLAN

106/3 Madden Close, Botany



WARNING: DISCLAIMER This information is not to be relied upon. It is strictly used for marketing and illustration purposes only. All measurements are approximate. Not to scale. No liability accepted. You must rely on your own inquiries and seek advice from your solicitor. Floor plan by cnkplan@cnkplan.com.au / www.cnkplan.com.au