






1605/161 Clarence Street Sydney NSW

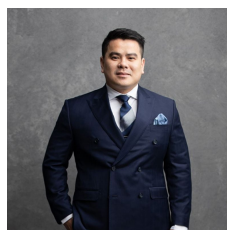
3  2  1 

Situated in the central hub of the CBD, this opulent three-bedroom apartment indulges in the finest features and finishes. Conveniently positioned within walking distance to QVB shops, Barangaroo, and public transport, this residence is part of the architectural marvel, ARC by Crown. Setting a remarkable standard for luxurious urban living, it features an impressive single-level layout and offers full access to the premium resort amenities within the building.

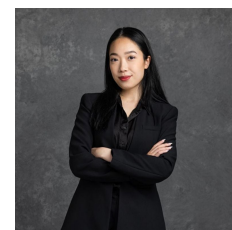
Type : Apartment
Price : \$ 2,150,000
View : <https://www.recoproperty.com.au/7933869>

Property Features:

- Crafted by the renowned architect Koichi Takada, recognized globally for his creative vision



Junianto Junianto
 02 8357 3377



Kaylee Ho
 02 8357 3377

[For full version visit the website](#)

STORAGE /
CAGE
2.7 x 1.2m



LEVEL SIXTEEN



This floor plan is for marketing purposes and is to be used as a guide only. All efforts have been made to ensure its accuracy although interested parties are urged to rely on their own enquiries.