
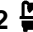



### G04/14 Epping Park Drive Epping NSW

2  2  2 

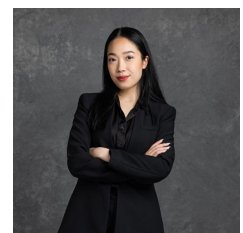
Presenting sophisticated finishes throughout spacious interiors, this ground-level apartment ensures convenient contemporary living within a complex designed for resort-style comfort. Positioned just 180 meters away from local bus stops and dining options, it also offers proximity to Eastwood Shopping Centre and the station, located two kilometers away.

- The expansive open-plan living and dining area seamlessly connects to outdoor spaces.
- A generously sized private courtyard.
- The modern kitchen is equipped with stone countertops and a gas cooking facility.
- The double-sized bedroom features built-in storage and

**Type** : Apartment  
**Price** : \$ 820,000  
**View** : <https://www.recoproperty.com.au/7937218>

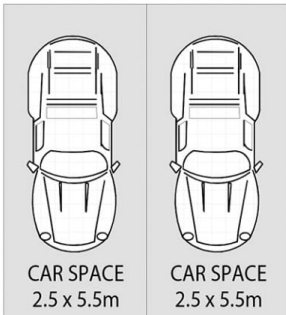
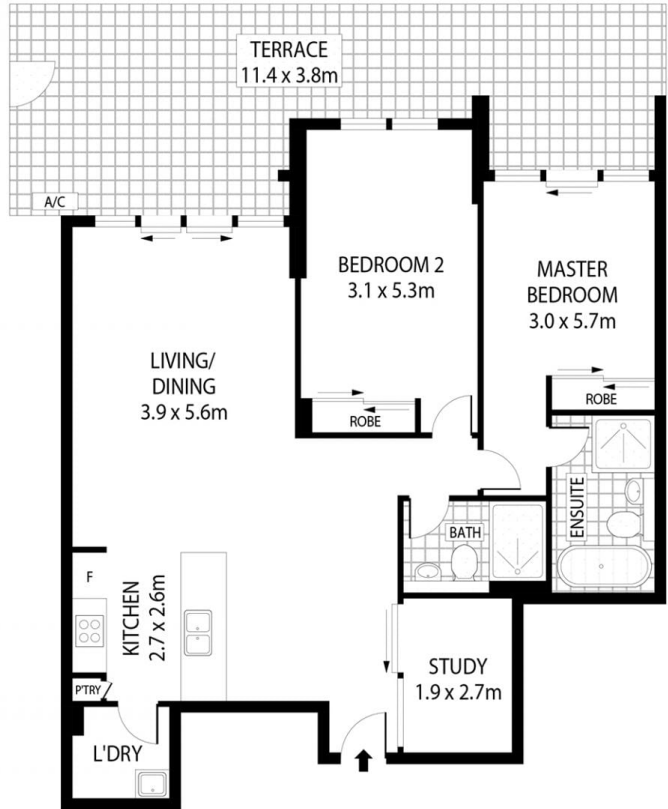


**Junianto Junianto**  
 02 8357 3377



**Kaylee Ho**  
 02 8357 3377

[For full version visit the website](https://www.recoproperty.com.au)



This floor plan is for marketing purposes and is to be used as a guide only. All efforts have been made to ensure its accuracy although interested parties are urged to rely on their own enquiries.