



2C Wykoff Lane Melrose Park NSW

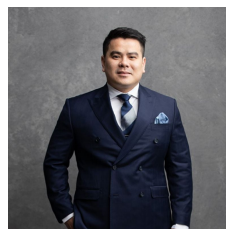
Welcome to the social hub of Melrose Park, the Village. The home of good vibes, friendly faces and plenty of convenience, it is a vibrant neighbourhood full of possibility.

Soak up some sun in the gorgeous private communal garden, which includes a unique wild play area, open lawn and BBQ areas, exclusively for Melrose Park Village Residents.

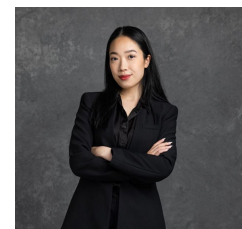
- Located approximately 6km from the Parramatta CBD and 15km from the Sydney CBD
- Melrose Park will be highly connected - the precinct is set to achieve the '30-minute City' status, defined as being within 30 minutes' accessibility of key employment areas,

[For full version visit the website](#)

Type : Apartment
Price : Start From \$623,000
View : <https://www.recoproperty.com.au/7980726>



Junianto Junianto
02 8357 3377



Kaylee Ho
02 8357 3377