



44/215 Bridge Road GLEBE NSW

2  1  1 

In an intimate, sundrenched and private setting surrounded by established gardens, this refreshingly spacious ground floor apartment enjoys leafy outlooks from every aspect over a 73sqm court garden and is only moments from a choice of shops, fine schools and excellent transport.

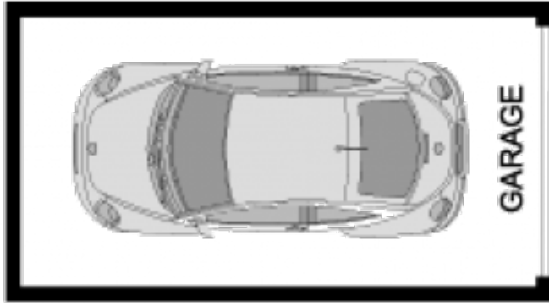
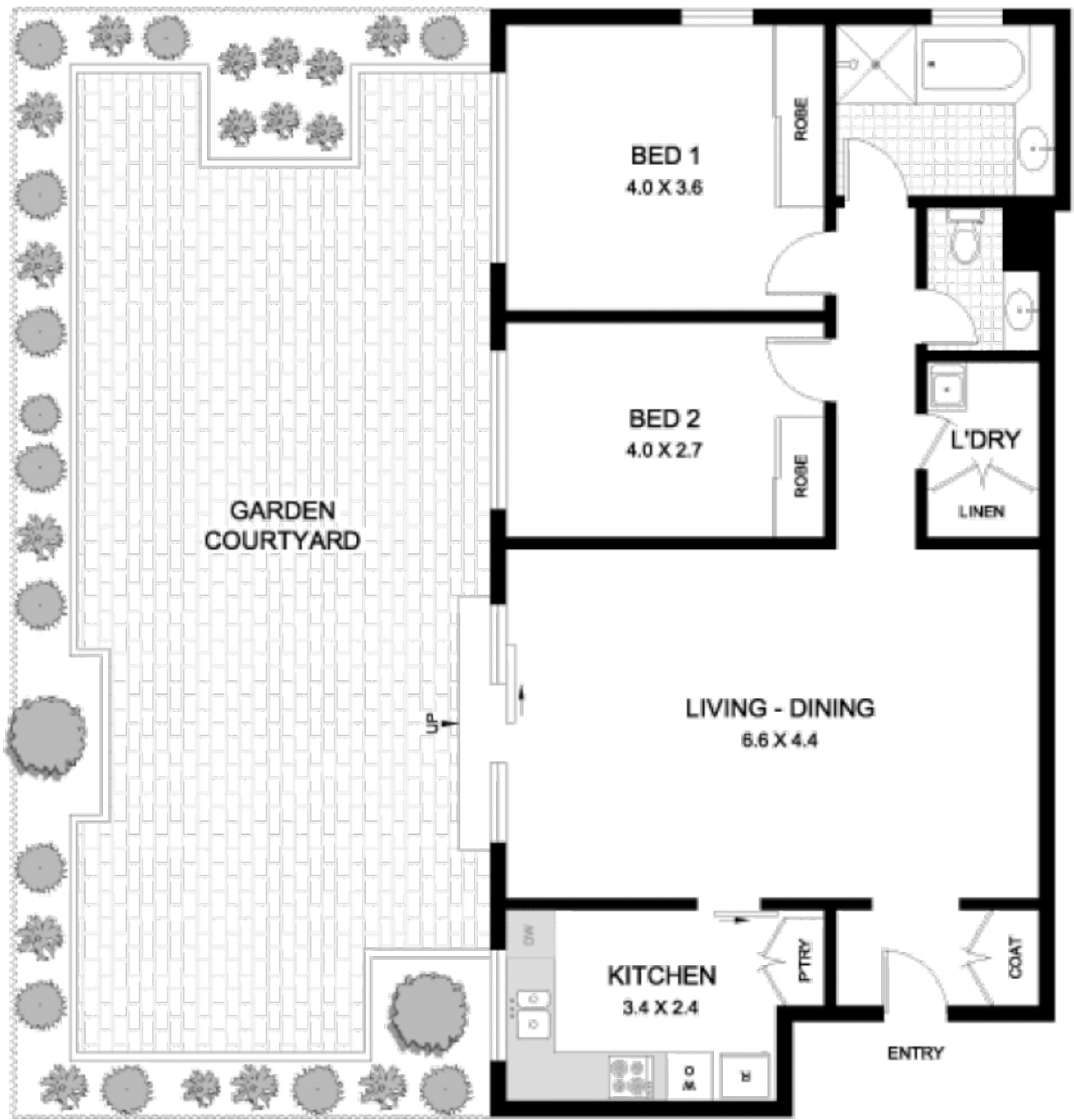
- Generous living extends to a court garden
- Double bedrooms with full length windows
- Floating timber floors throughout
- Large kitchen with good appliances & storage
- Split bathroom includes bath, separate laundry
- Internal access to a basement single LUG
- Metres to boutique eateries and public transport

Type : Apartment
Price : \$ 685,000
Building Size : 178 sqm
View : <https://www.recoproperty.com.au/8065394>



Real Estate EST. 1980

Garry White Real Estate
02 9660 1044



44/215 BRIDGE ROAD

GLEBE



PLANS SHOWN ARE ONLY INDICATIVE OF LAYOUT.
DIMENSIONS ARE APPROXIMATE!

METRO FLOORPLANS
0418 223 433

Garry White
FIRST NATIONAL REAL ESTATE