



**111 St Johns Road GLEBE NSW**

3  1 

Perfectly situated just a short walk to Glebe's shops and boutique cafes, this tri-level Victorian terrace presents an affordable prospect full of untapped potential in a desirable village setting. Its period features, versatile interiors and private entertainers' courtyard provide the perfect backdrop for an elegant contemporary renovation.

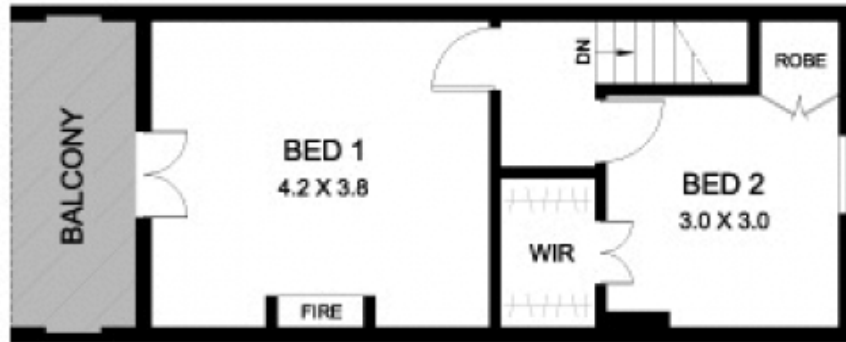
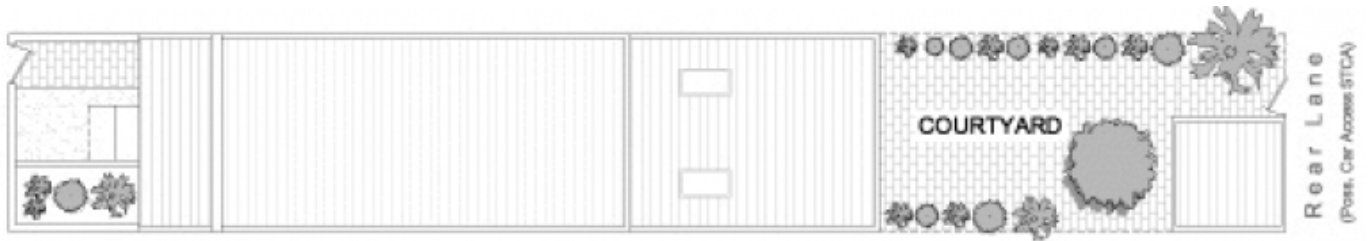
- Spacious formal living and dining with high ceilings
- North facing courtyard ideal for summer barbecues
- Good sized original kitchen plus casual dining room
- Three bedrooms include large master with balcony
- Period fireplaces, ceiling roses and timber floors
- Potential rear lane access off street parking (STCA)
- Close to city buses, restaurants and local schools

**Type** : House  
**Land Size** : 123 sqm  
**View** : <https://www.recoproperty.com.au/8065397>

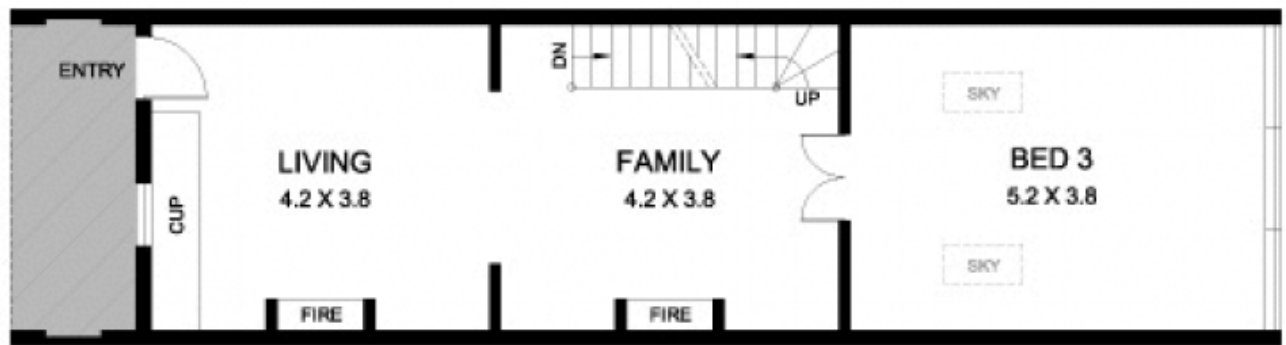
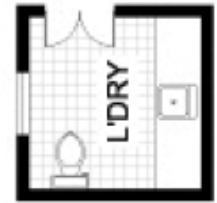


**Junianto Lianto**  
**02 8357 3377**

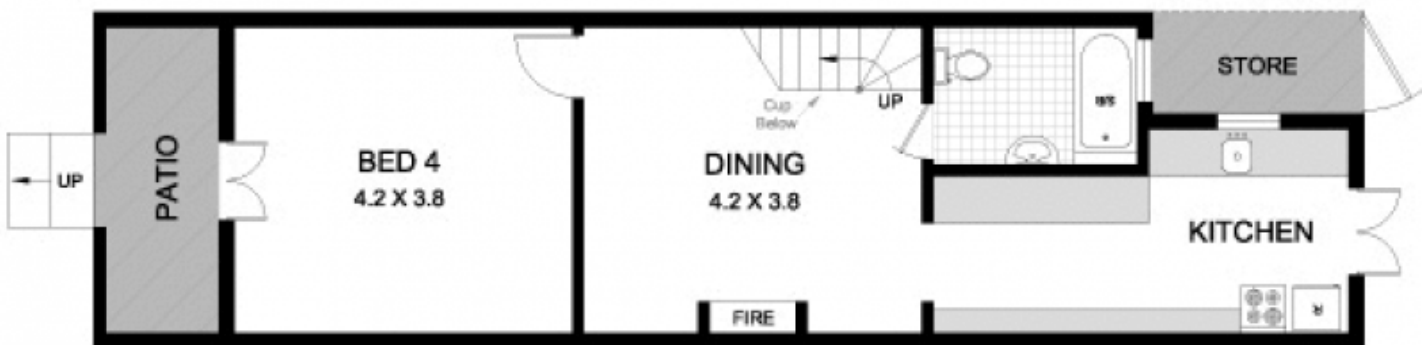
ST JOHNS ROAD



UPPER LEVEL



ENTRY LEVEL



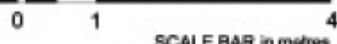
LOWER LEVEL



111 ST JOHNS ROAD

GLEBE

PLANS SHOWN ARE ONLY INDICATIVE OF LAYOUT.  
DIMENSIONS ARE APPROXIMATE



METRO FLOORPLANS  
0418 223 433