

101a Hereford Street FOREST LODGE NSW

3  1 

AUCTION 1.00pm SATURDAY - Inspect from 12.30pm

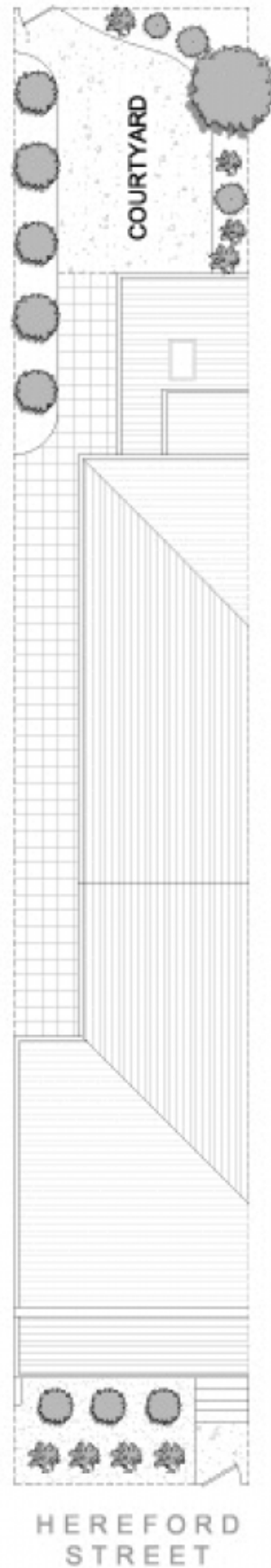
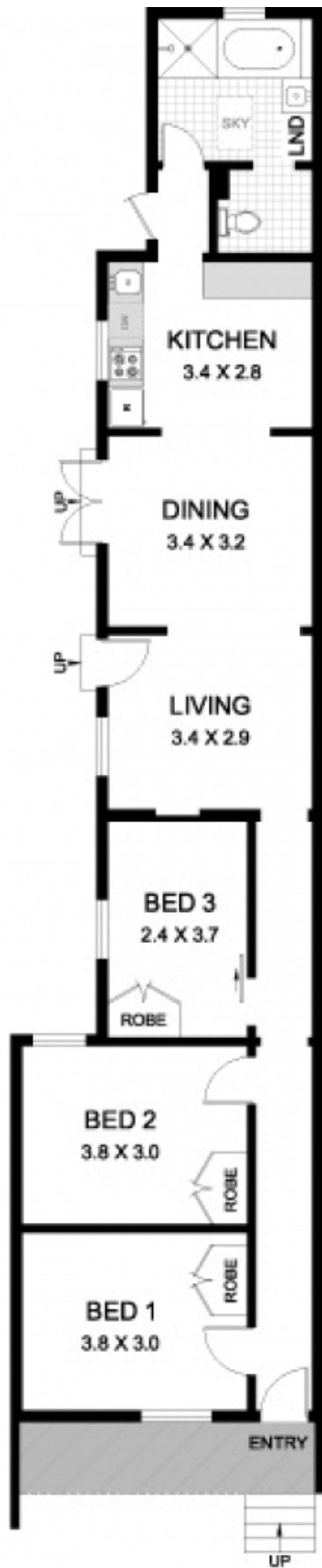
A tasteful interior update has breathed new life into this generously proportioned residence and made it a fresh and easy care home that retains much of its original character. It offers a good floorplan over a single level with bright interiors, a leafy garden northerly aspect and access to rear lane.

- Generous 3 bedroom residence
- Tastefully updated throughout
- High ceilings, polished timber floors, period detail
- 171sqm with north rear aspect
- Private leafy garden and rear access

Type : House
Land Size : 171 sqm
View : <https://www.recoproperty.com.au/8065401>



Junianto Lianto
02 8357 3377



SITE PLAN
(at reduced scale)



101A HEREFORD STREET FOREST LODGE

PLANS SHOWN ARE ONLY INDICATIVE OF LAYOUT. DIMENSIONS ARE APPROXIMATE. 0 1 5 SCALE BAR in metres