



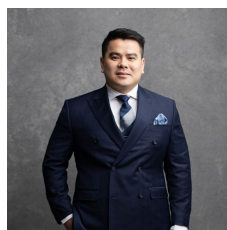
### 29 Boyce Street GLEBE NSW

5 🛏 3 🚿 2 🚗

This traditional Victorian residence represents an exceptional opportunity to acquire a substantial property in a prized Toxteth Estate address. Set on an expansive 342sqm landholding with dual street access, it features a flowing single level floorplan with many retained period details and exciting future potential to upgrade and create a superb family haven.

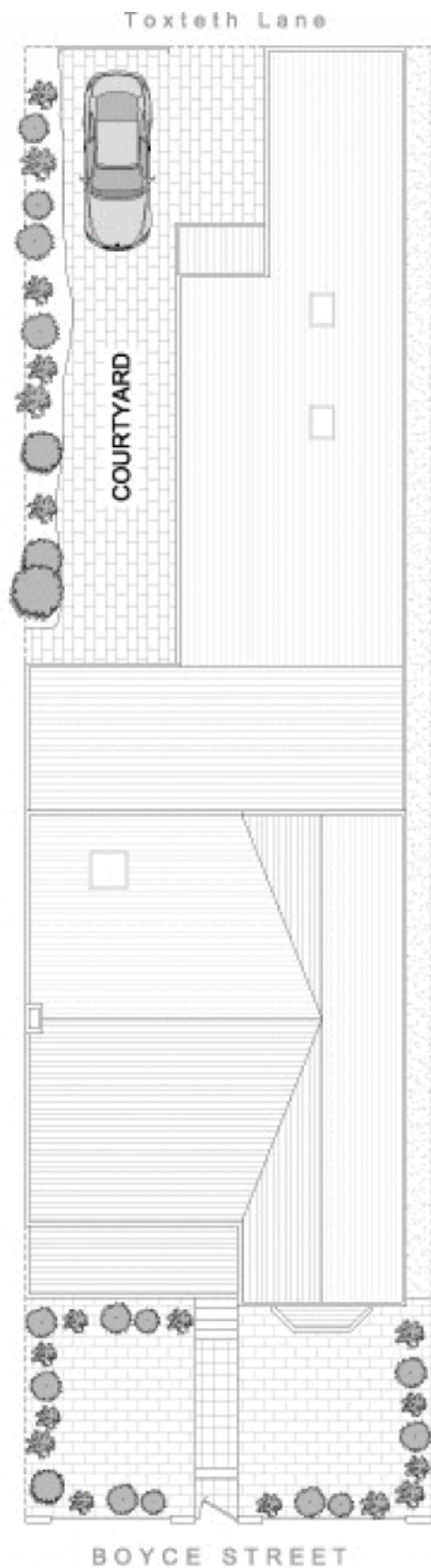
**Type** : House  
**Land Size** : 342 sqm  
**View** : <https://www.recoproperty.com.au/8065408>

North east aspect provides natural light throughout  
 High ceilings, polished floors and ornate features  
 Bright open plan design with large lounge & dining space  
 Sunlit rear courtyard, garage plus off street car space  
 Large bedrooms & island kitchen with gas appliances  
 Scope to update, restore or completely transform (STCA)



**Junianto Lianto**  
 02 8357 3377

[For full version visit the website](#)



**SITE PLAN**  
(at reduced scale)



29 BOYCE STREET

GLEBE

PLANS SHOWN ARE ONLY INDICATIVE OF LAYOUT.  
DIMENSIONS ARE APPROXIMATE



METRO FLOORPLANS  
0418 223 433