



6/41 Gottenham Street GLEBE NSW

1  1  1 

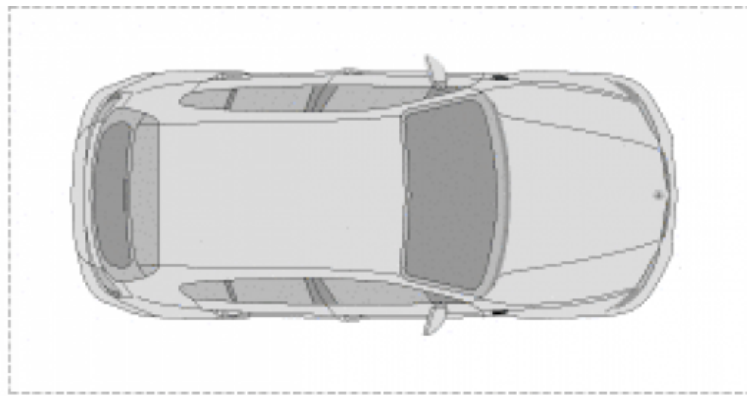
This fresh and bright apartment is conveniently located in a quiet, tree lined street in the heart of Glebe village. The apartment offers first home buyers a fantastic opportunity to secure an affordable entry into the Glebe market and for investors immediate returns.

Type : Apartment
Land Size : 48 sqm
View : <https://www.recoproperty.com.au/8065410>

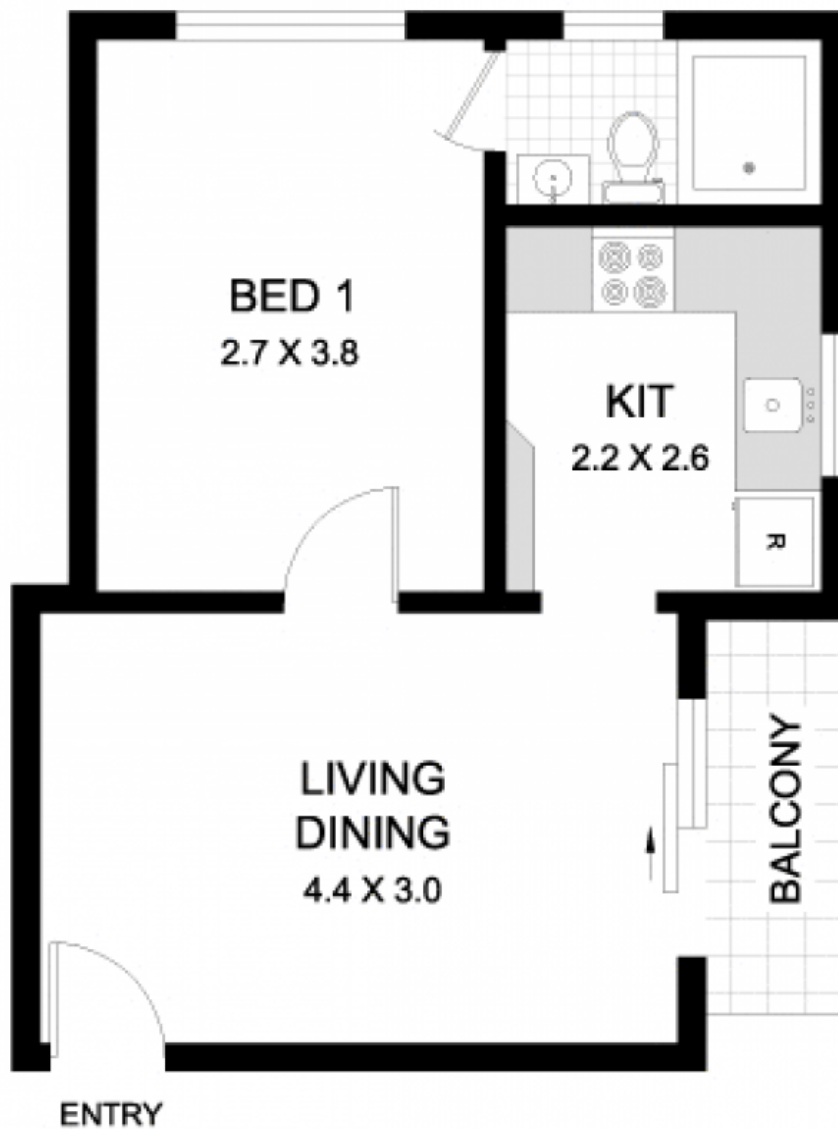
Freshly painted interiors, updated kitchen
 Tidy security building full brick construction
 Small strata plan of 9 lots with future potential
 Convenient location - walk to Glebe village, light rail
 Current rent return \$400pw



Junianto Lianto
 02 8357 3377



CARSPACE



6/14 GOTTENHAM STREET

GLEBE

PLANS SHOWN ARE ONLY INDICATIVE OF LAYOUT.
DIMENSIONS ARE APPROXIMATE



METRO FLOORPLANS
0418 223 433