



### 186 Hereford Street FOREST LODGE NSW

5 🏠 2 🚗

This original Victorian terrace presents a rare opportunity to secure a large terrace home in a peaceful sought after location offering a convenient inner-city lifestyle. Behind the understated facade is a traditional terrace floorplan with 4-5 bedrooms, abundant original features and polished timber floors, leading to a deep private leafy garden with rear lane. This property is ideal to recreate into your dream inner city home or be a solid investment with with a current tenancy at \$1,000pw and wonderful potential for future growth.

**Type** : House  
**Land Size** : 155 sqm  
**View** : <https://www.recoproperty.com.au/8065421>

- \*4-5 bedroom accommodation
- \*Deep private garden block with rear lane
- \*Original features, polished floors



**Junianto Lianto**  
**02 8357 3377**

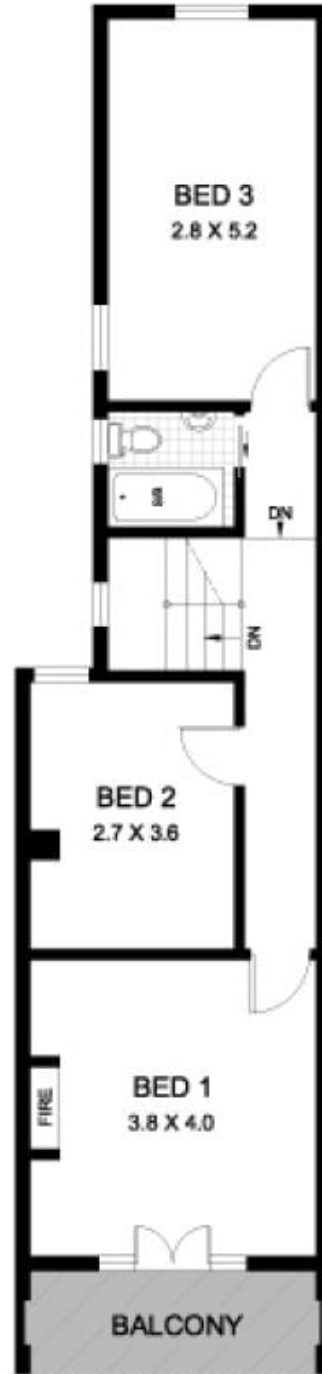
[For full version visit the website](#)



**LOWER LEVEL**



**ENTRY LEVEL**



**UPPER LEVEL**

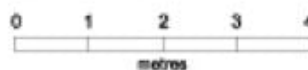


**SITE PLAN**

(at reduced scale)

This plan is for illustrative purposes only and dimensions are approximate. It does not constitute part of any legal document or commercial contract for the sale or lease of this property.

**METRO FLOORPLANS**  
0418 223 433



**186 HEREFORD STREET  
GLEBE**