



1/12 Bortfield Drive CHISWICK NSW

2  1  1 

Enjoy easy access, level living in this oversize two bedroom apartment adjacent to Blackwall Point Reserve and Chiswick ferry wharf conveniently located with city bus and ferry access.

- Two bedroom, master with built-in robe
 - Oversize combined living and dining
 - Original and tidy kitchen and bathroom
 - Private security entry, internal laundry
 - Single garage with internal access
 - Ample storage area, Currently tenanted
- INSPECT SATURDAY 12 - 12:30pm**

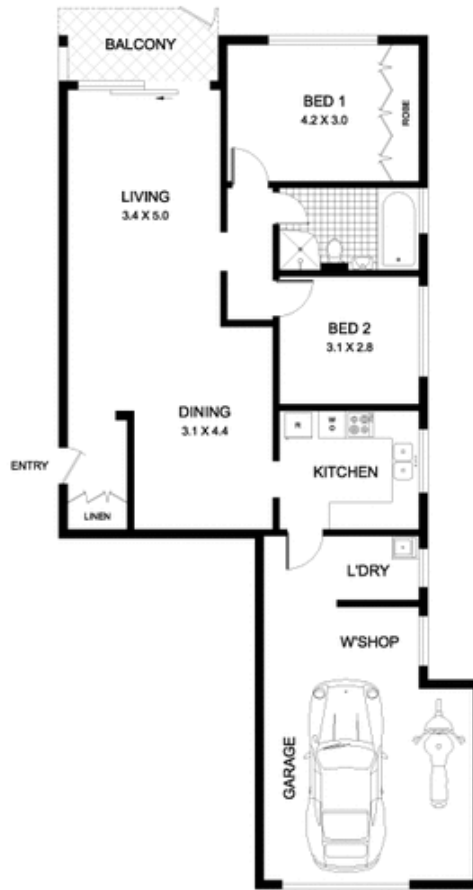
Type : House
View : <https://www.recoproperty.com.au/8065442>



Real Estate EST. 1980

Garry White Real Estate
02 9660 1044

Access to Common Gardens



1/12 BORTFIELD DRIVE CHISWICK

PLEASE SHOW ARE ONLY INDICATIVE OF APPROX.
DIMENSIONS ARE APPROXIMATE

0 1 3
SCALE BAR IN METERS

METRO FLOORPLANS
0418 223 433