

### 218 Hereford Street FOREST LODGE NSW

2  1 

Peacefully tucked away in one of the area's most sought after streets, this light-filled Victorian terrace has been beautifully refurbished to suit modern living. Fully renovated and architecturally enhanced to maximise light, space and open plan living, this two storey terrace displays an elegant modern touch. With an abundance of natural light, this stylish end terrace is immaculately presented in a serene surrounding. Secure leafy street with easy access to Sydney University and CBD. Leisurely walk to shops, cafes, buses, schools and waterside parklands in a premier lifestyle location.

- Separate lounge and dining with polished timber floors
- Dining area opens to private rear courtyard with sunlit

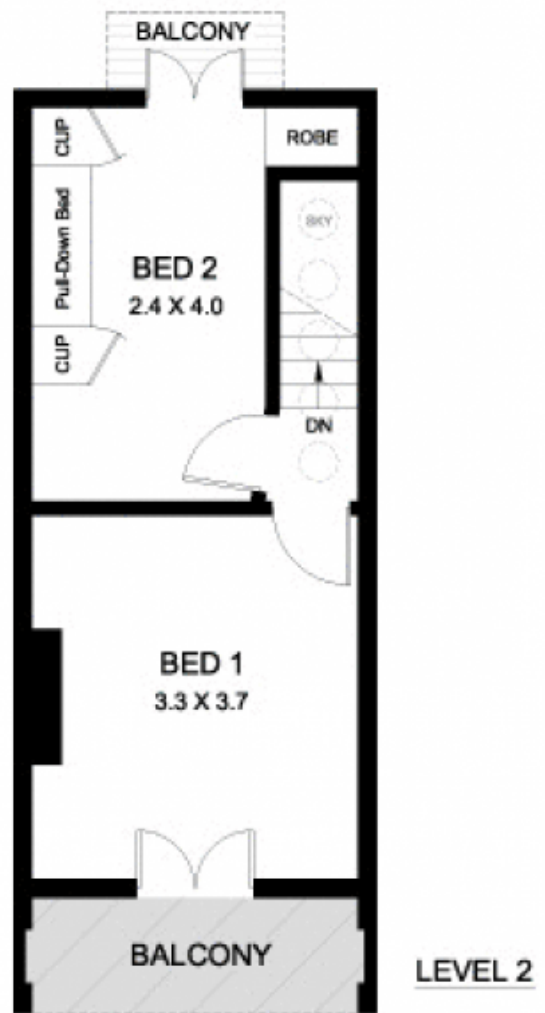
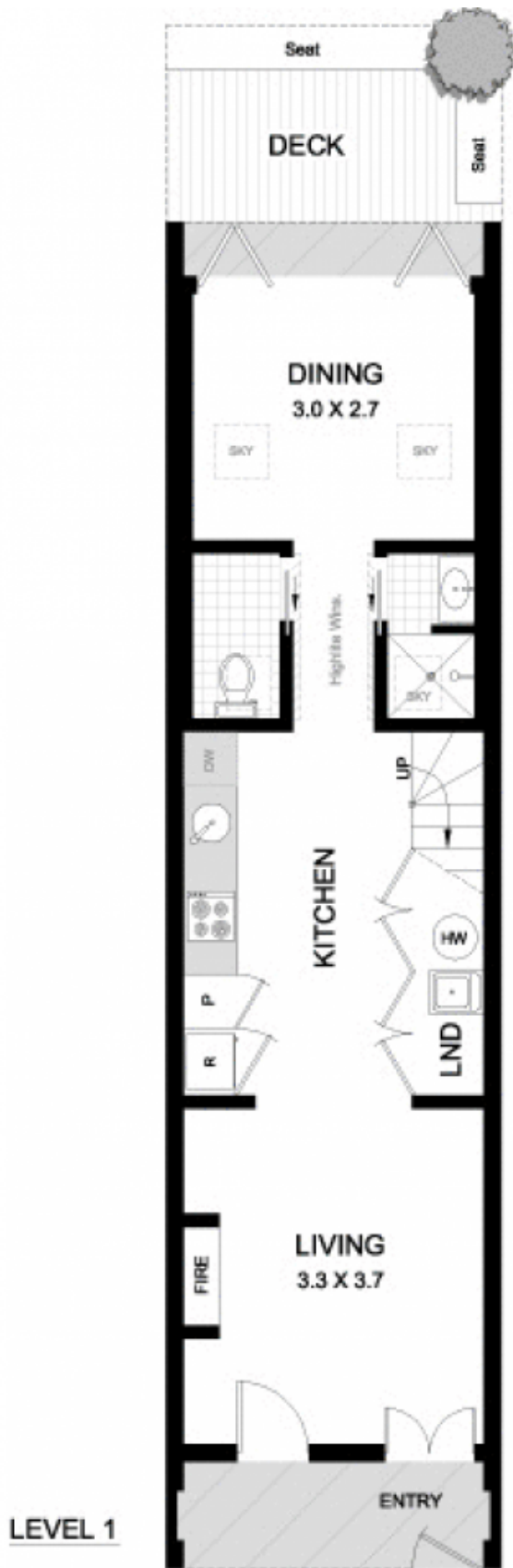
[For full version visit the website](#)

**Type** : House  
**Price** : \$ 710,000  
**Land Size** : 59 sqm  
**View** : <https://www.recoproperty.com.au/8065477>



Real Estate EST. 1980

**Garry White Real Estate**  
**02 9660 1044**



218 HEREFORD STREET FOREST LODGE

PLANS SHOWN ARE ONLY INDICATIVE OF LAYOUT. DIMENSIONS ARE APPROXIMATE

0 1 3  
SCALE BAR in metres

METRO FLOORPLANS  
0418 223 433



**Garry White**  
FIRST NATIONAL REAL ESTATE