



4/92 Forsyth Street GLEBE NSW

2  2  1 

Exemplifying opulence, this residence redefines luxury living. Having the finest quality fittings and finishes it is coupled with breathtaking views of Blackwattle Bay and the Anzac Bridge from this waterfront reserve position, this is the ultimate in city living only moments from Glebes cafe culture, restaurants and other amenities.

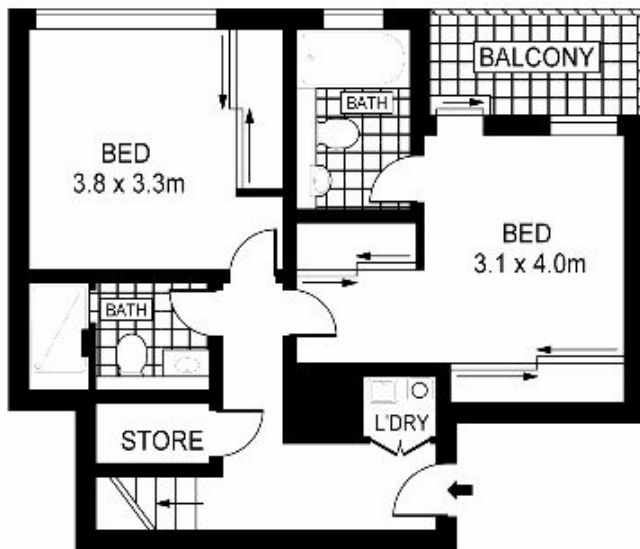
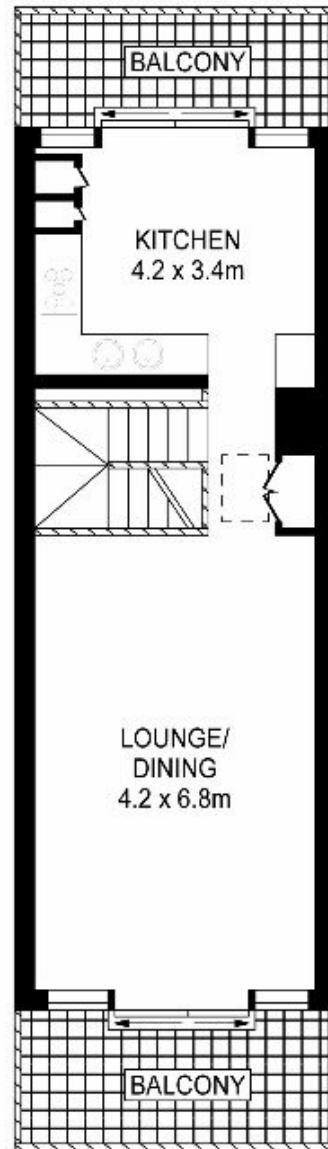
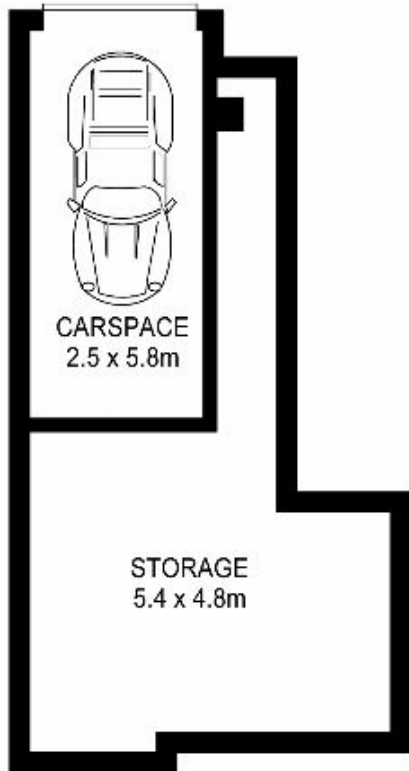
Type : Apartment
Building Size : 246 sqm
View : <https://www.recoproperty.com.au/8065478>

- Two double bedrooms with built-ins, master with balcony
- Eat-in, gas kitchen, granite bench tops, Smeg appliances
- Open plan living/dining opens to entertainer's balcony
- Designer bathroom and ensuite, internal laundry
- Secure parking with caged storage area
- Walk to city or light rail from this ideal location
- Moments to parks, shops, transport and schools



Garry White Real Estate
02 9660 1044

[For full version visit the website](https://www.recoproperty.com.au)



SECOND FLOOR

THIRD FLOOR

0 1 2 3 4 5
SCALE (METRES)

PLANS SHOWN ONLY INDICATIVE OF LAYOUT. DIMENSIONS ARE APPROXIMATE.
Floor plans by opwaddolans.com

INT : 150.13m²



4/92 FORSYTH STREET