

7 Colbourne Avenue GLEBE NSW

3  1 

This pretty Victorian home is quietly positioned on a broad tree-lined street, in the heart of Glebe, and is being offered for the first time in 40 years.

- Three amperly portioned bedrooms, Recently updated kitchen
- Light-filled archways seperate living and dining areas
- Private north-easterly courtyard with possible rear lane access
- Immediately liveable with fantastic opportunity to modernise
- City fringe locale, walk to CBD, light rail & Glebe Village

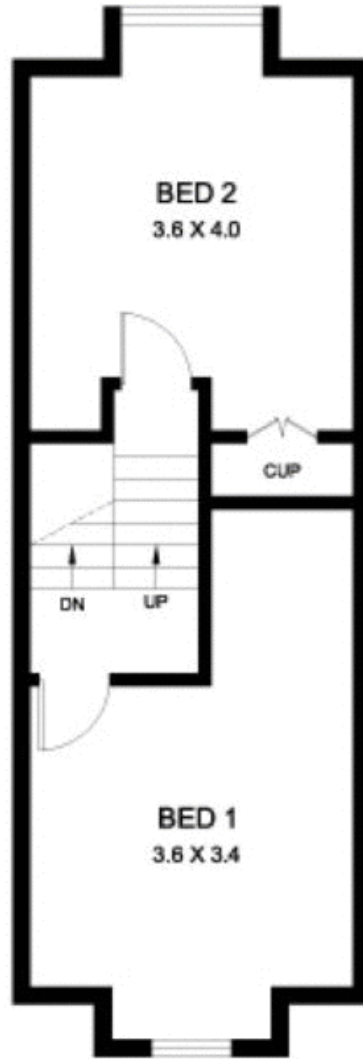
Type : House
Land Size : 116 sqm
View : <https://www.recoproperty.com.au/8065481>



Garry White Real Estate
02 9660 1044

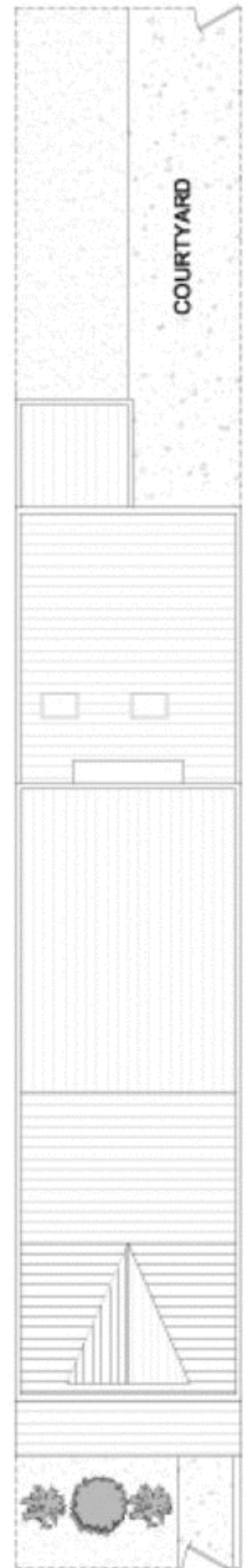


LEVEL 1



LEVEL 2

Broughton Street



COLBOURNE AVENUE



7 COLBOURNE AVENUE

GLEBE

PLANS SHOWN ARE ONLY INDICATIVE OF LAYOUT.
DIMENSIONS ARE APPROXIMATE



METRO FLOORPLANS
0418 223 433

Garry White
FIRST NATIONAL REAL ESTATE