






161 Bridge Road GLEBE NSW

5  2  2 

The distinguished 'St Elmo' c1879 is one of Glebe's landmark manors, not offered to the market in over 30 years. Ornate period detail and oversized proportions characterise this charming 572sqm estate which combines traditional grandeur with elegant whisper quiet interiors just metres to cafes.

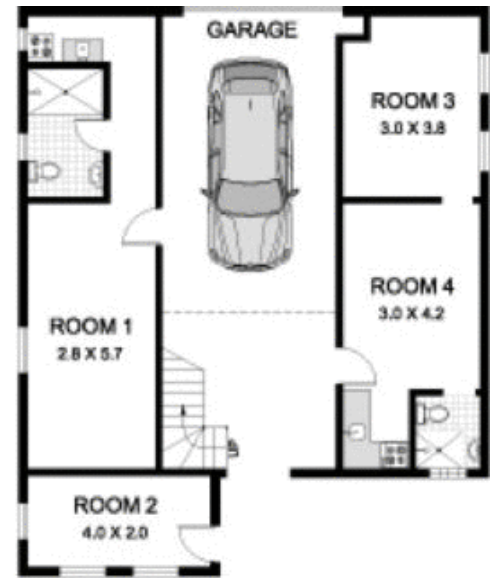
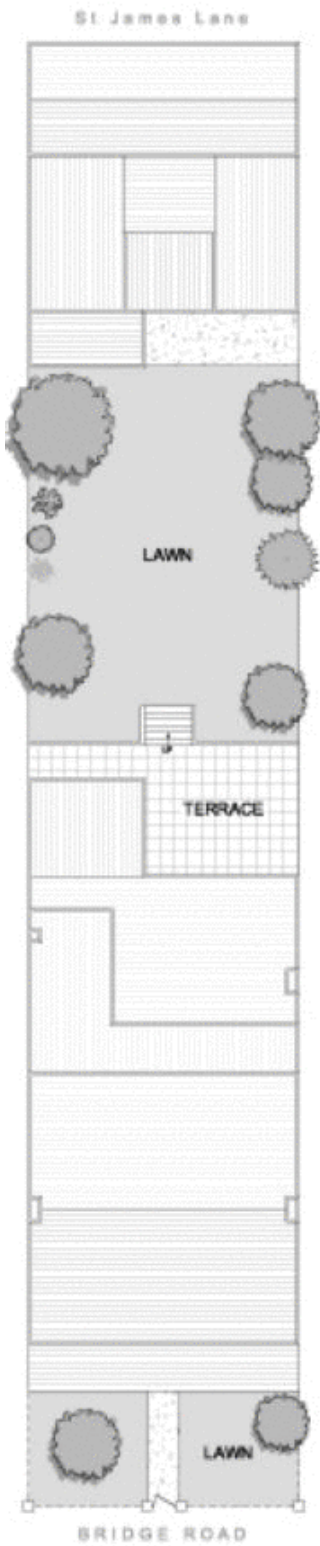
Type : House
Land Size : 572 sqm
View : <https://www.recoproperty.com.au/8065483>

- An array of formal and casual living room spaces
- Marble fireplaces, towering ceilings and picture rails
- Open plan family area with gas kitchen, French doors
- Alfresco terrace, gardens, converted stable lodgings
- Rear lane access to a double lock-up garage
- Within moments to village shops and city transport



Real Estate EST. 1980

Garry White Real Estate
02 9660 1044



LEVEL 2

LEVEL 1



161 BRIDGE ROAD

GLEBE

PLANS SHOWN ARE ONLY INDICATIVE OF LAYOUT.
DIMENSIONS ARE APPROXIMATE

0 1 5
SCALE BAR in metres



METRO FLOORPLANS
0418 223 433



Garry White
FIRST NATIONAL REAL ESTATE