



23 Piper Street ANNANDALE NSW

4  2  1 

Wonderfully spacious and light filled, this Victorian style residence showcases a sleek modern open plan of unique character features and tranquil outdoor entertaining areas across a dual level floorplan. The peaceful property is desirably placed within strolling distance to local schools, shopping, dining and transport.

Type : House
Land Size : 190 sqm
View : <https://www.recoproperty.com.au/8065497>

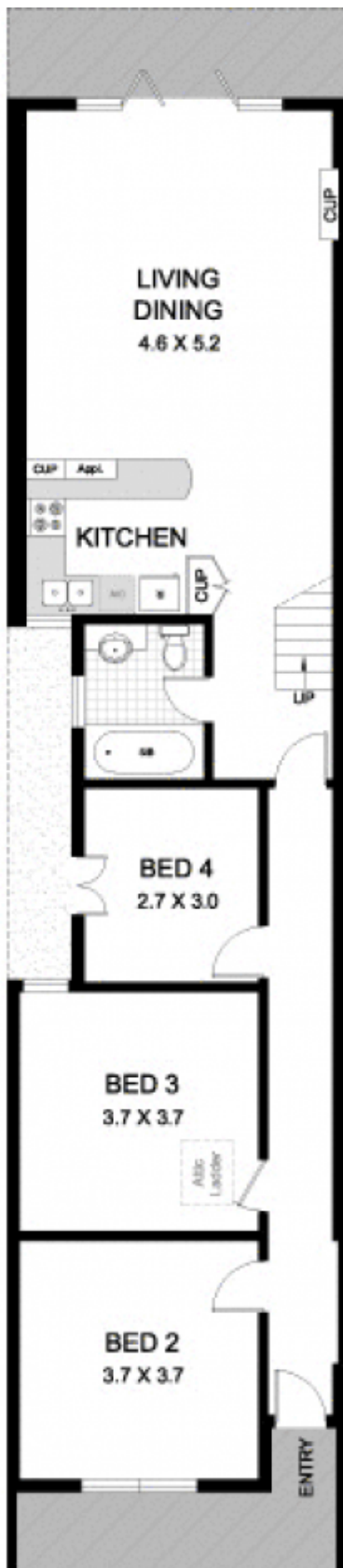
- Thoughtfully revamped with quality finishes
- Lush landscaped gardens with established trees
- Open plan living/dining space flows to outdoors
- Private rear courtyard & entertaining space
- Sleek designer kitchen with superior gas cooking
- Ideal Northerly facing yard attracting all-day light
- Superbly located adjacent to parklands



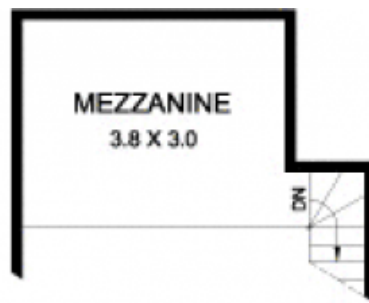
Real Estate EST. 1980

Garry White Real Estate
02 9660 1044

[For full version visit the website](https://www.recoproperty.com.au)



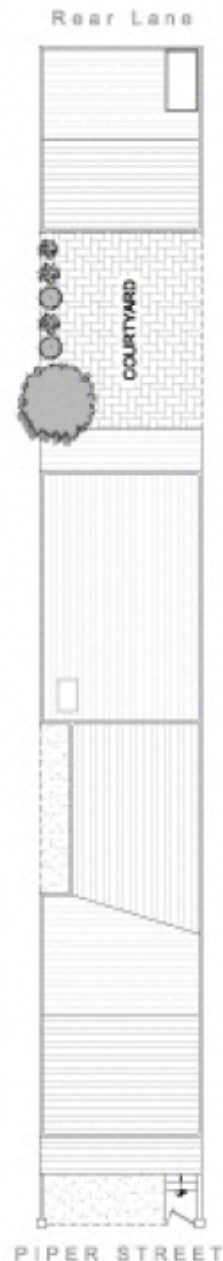
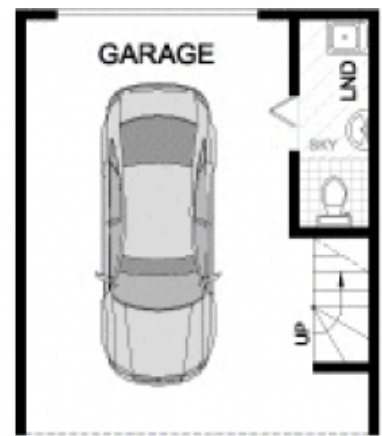
LEVEL 1



LEVEL 2 (Rear)



LEVEL 2 (Front)



23 PIPER STREET

ANNANDALE

PLANS SHOWN ARE ONLY INDICATIVE OF LAYOUT.
DIMENSIONS ARE APPROXIMATE



METRO FLOORPLANS
0418 223 433



Garry White
FIRST NATIONAL REAL ESTATE