



2/41 Gottenham Street GLEBE NSW

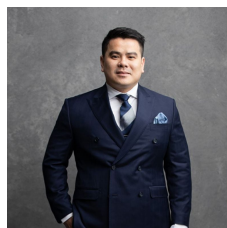
1  1 

Conveniently located in a quiet tree lined street in the heart of Glebe, this apartment offers first home buyers or investors a fantastic opportunity to secure an affordable entry into the Glebe market.

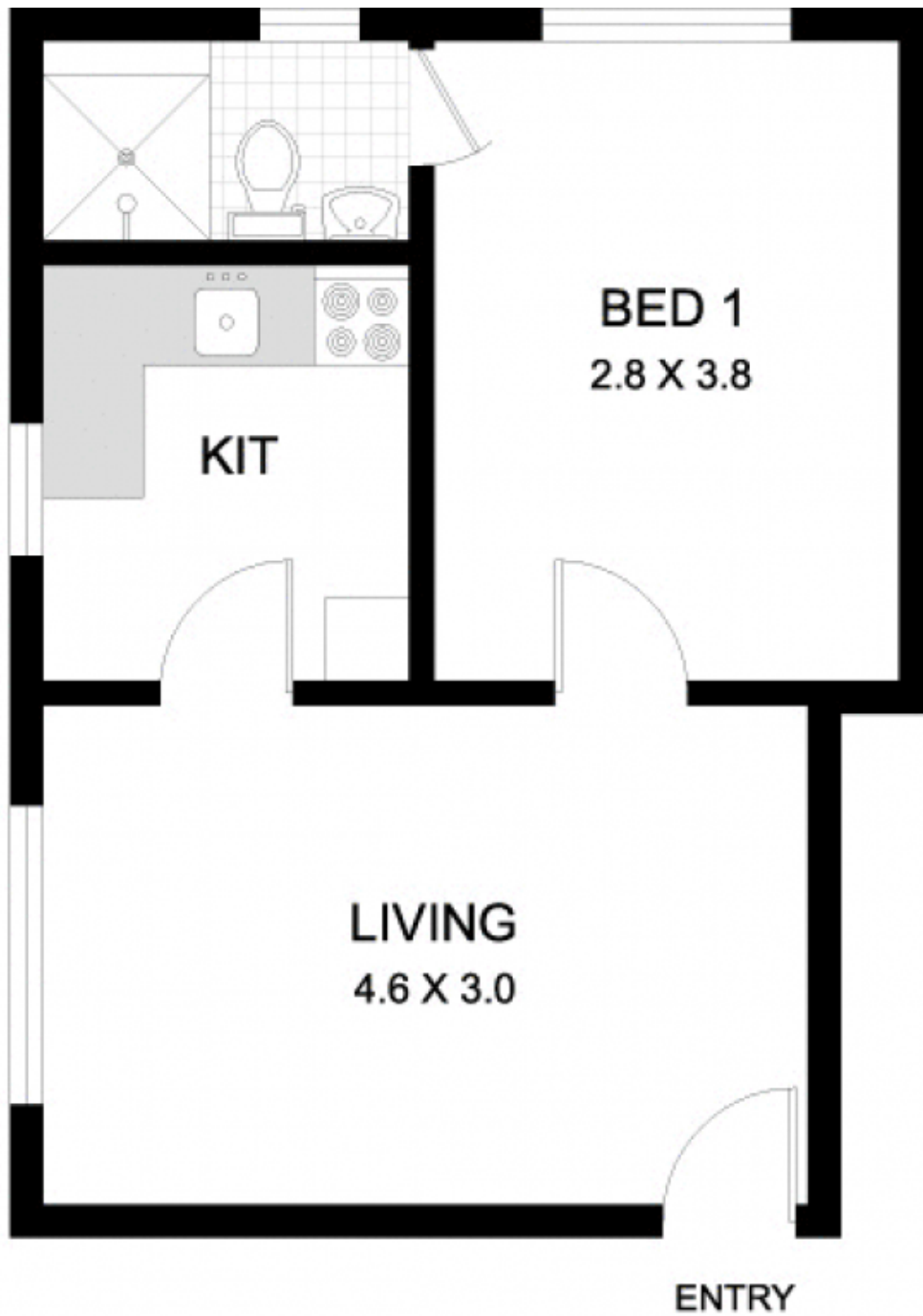
- Genuine 1 bedroom requiring renovation
- Tidy security building full brick construction
- Convenient location - walk to Glebe village, light rail

- Small strata plan of 9 lots with future potential
- Potential rental return of \$350 per week

Type : Apartment
Price : \$ 325,000
Building Size : 34 sqm
View : <https://www.recoproperty.com.au/8065507>



Junianto Lianto
02 8357 3377



2/41 GOTTENHAM STREET

GLEBE

PLANS SHOWN ARE ONLY INDICATIVE OF LAYOUT.
DIMENSIONS ARE APPROXIMATE

0

1

2

SCALE BAR in metres



METRO FLOORPLANS
0418 223 433



Garry White

FIRST NATIONAL REAL ESTATE