



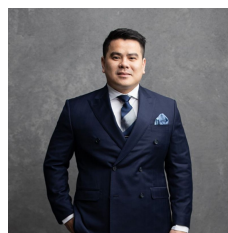
**225 Young Street ANNANDALE NSW**

3  1  1 

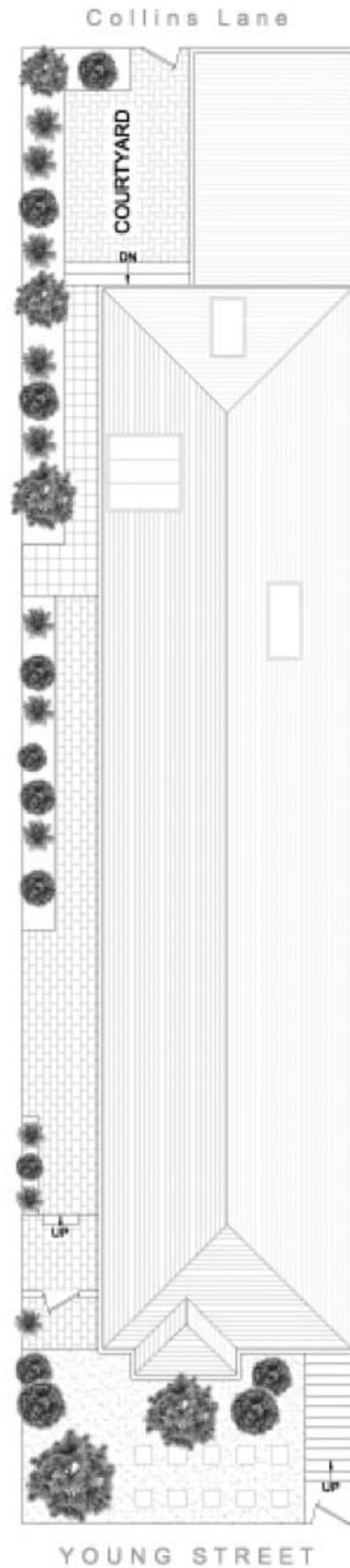
This freestanding character residence represents an excellent buying opportunity for those seeking a large single level home in a premium lifestyle location. The double brick residence sits on an elevated 271sqm block, has rear lane garaging and is situated in a prime village position.

**Type** : House  
**Land Size** : 271 sqm  
**View** : <https://www.recoproperty.com.au/8065537>

- Lofty ceilings, polished timber floors, marble fireplaces
- Separate living and dining, well appointed gas kitchen
- Double bedrooms and full bathroom
- Sheltered patio and private courtyard garden
- Lock-up garage with access from rear lane
- Excellent potential to redesign or update



**Junianto Lianto**  
**02 8357 3377**



SITE PLAN (at reduced scale)



This plan is for illustrative purposes only and dimensions are approximate. It does not constitute part of any legal document or commercial contract for the sale or lease of this property.

**225 YOUNG STREET  
ANNANDALE**