



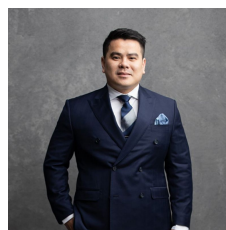
7/42 Lombard Street GLEBE NSW

2  2  1 

Set against an inspiring backdrop of city skyline and Blackwattle Bay this light filled apartment offers a dress circle location enjoying some of the best views in Glebe. A private top floor position with an ideal north-easterly aspect capturing dazzling views and a peaceful cul-de-sac location presents a rare opportunity to acquire a quality apartment in a tightly held block that offers outstanding lifestyle and convenience.

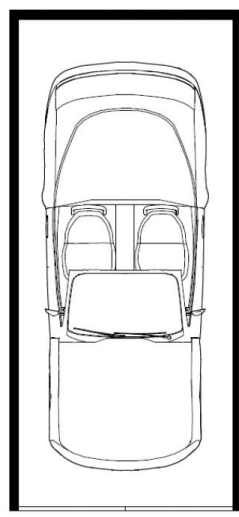
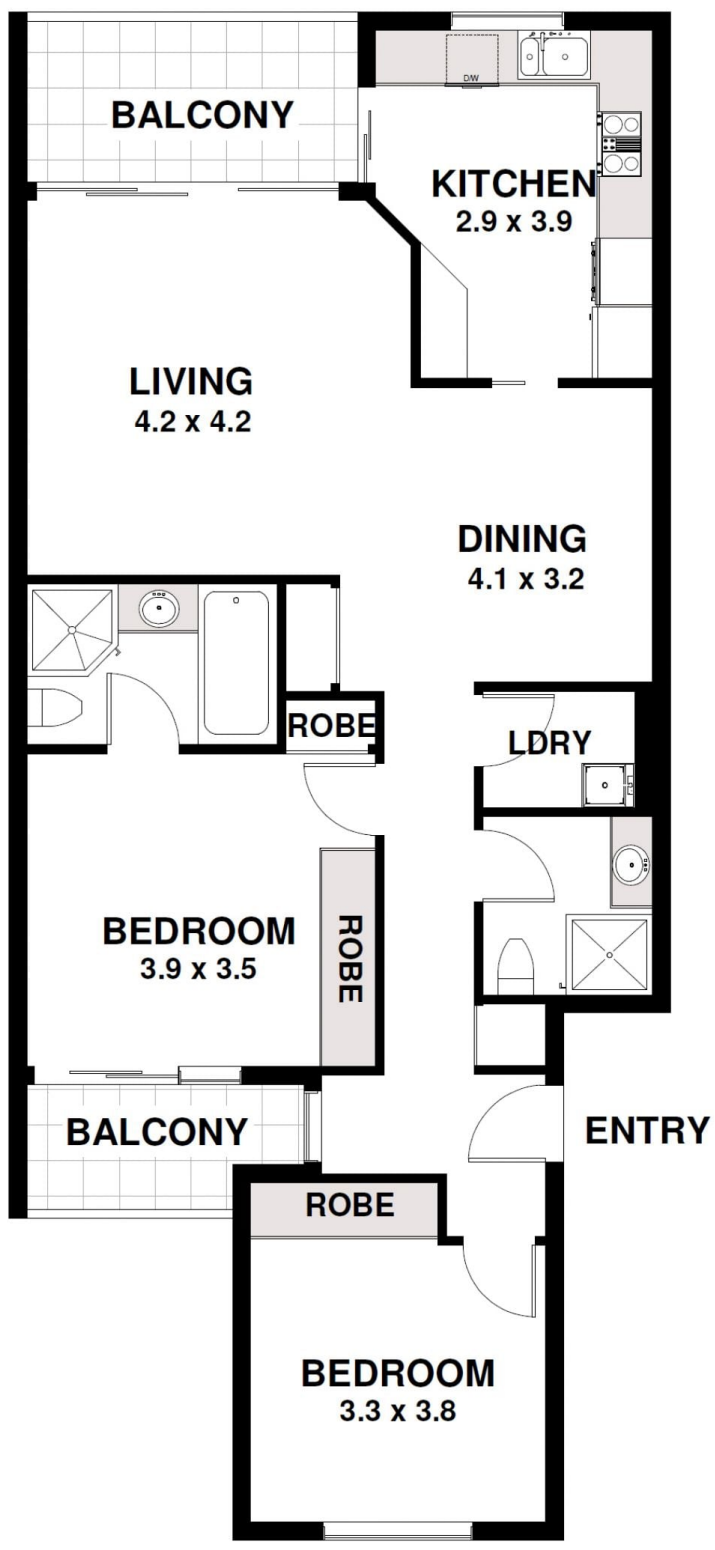
Type : House
Land Size : 116 sqm
View : <https://www.recoproperty.com.au/8065542>

- *Spacious, freshly carpeted, light filled interiors
- *Private sunny balcony with stunning views
- *Two double bedrooms with built-in robes
- *Main bedroom has full ensuite and balcony
- *Lock-up garage, adjacent to light rail



Junianto Lianto
02 8357 3377

[For full version visit the website](#)



GARAGE
2.4 x 5.4

Apartment 7, 42 Lombard Street, Glebe

DISCLAIMER CLAUSE The information contained in this brochure has been furnished to us by the vendors. The plan is provided as a guide only. While we trust it to be correct, we cannot guarantee its accuracy. Sizes and areas indicated are approximate only. We have not verified whether or not that information is accurate and do not have any belief one way or another in its accuracy. We do not accept any responsibility to any person for its accuracy and do no more than pass it on. All interested parties should make and rely on their own enquiries in order to determine whether or not this information is in fact accurate.