



1/43 Hereford Street GLEBE NSW

3  1  1 

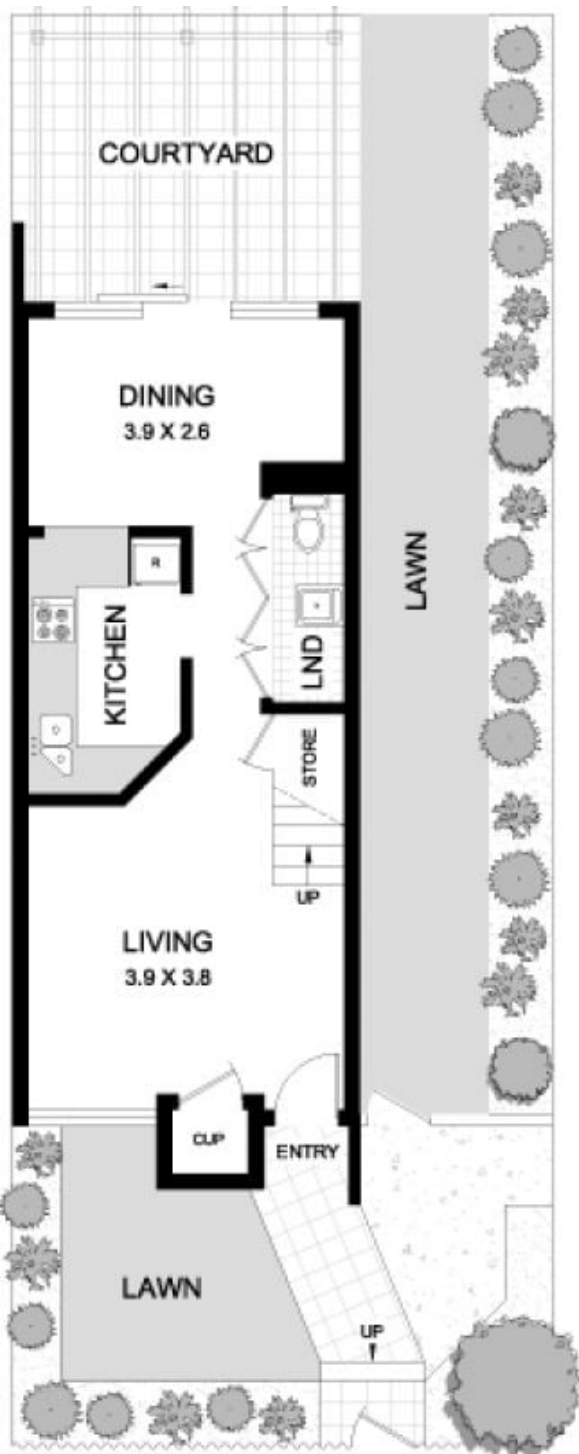
This light filled three bedroom tri-level townhouse is desirably located in one of Glebe's most sought after tree-lined streets, convenient to a wonderful inner-city cafe lifestyle. Positioned within a small boutique strata plan and enjoying a private garden setting, this semi-detached townhouse is ready for a new owners touch to bring out the fantastic potential.

- *Three bedrooms with built-in storage
- *Separate lounge and dining spaces
- *Private garden on three sides
- *Main bath upstairs, second WC off living
- *Secure undercover parking
- *Stroll to village and all amenities

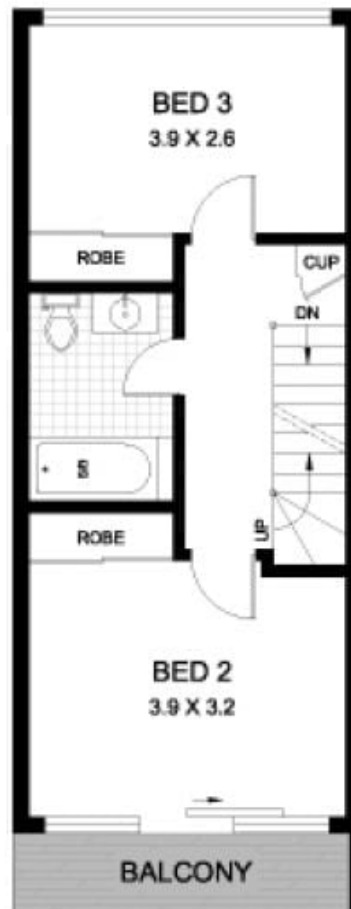
Type : Townhouse
Land Size : 165 sqm
View : <https://www.recoproperty.com.au/8065543>



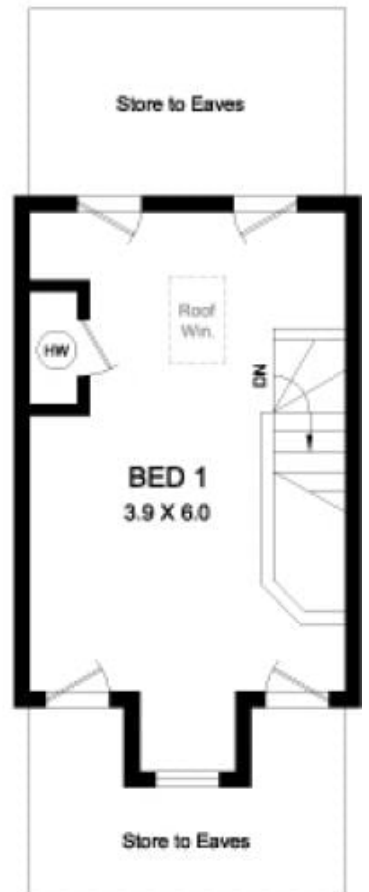
Junianto Lianto
02 8357 3377



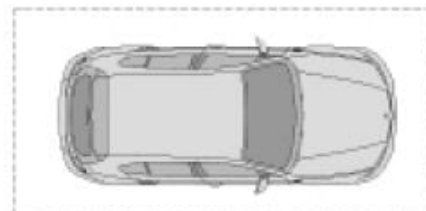
LEVEL 1



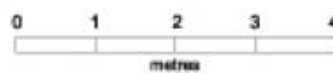
LEVEL 2



LEVEL 3



SECURITY CARSPACE



This plan is for illustrative purposes only and dimensions are approximate. It does not constitute part of any legal document or commercial contract for the sale or lease of this property.

 METRO FLOORPLANS
0418 223 433

**1/43 HEREFORD STREET
GLEBE**