



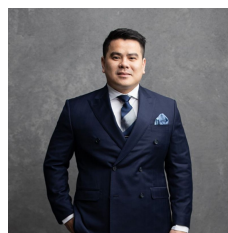
### 49 Gottenham Street GLEBE NSW

1  1  1 

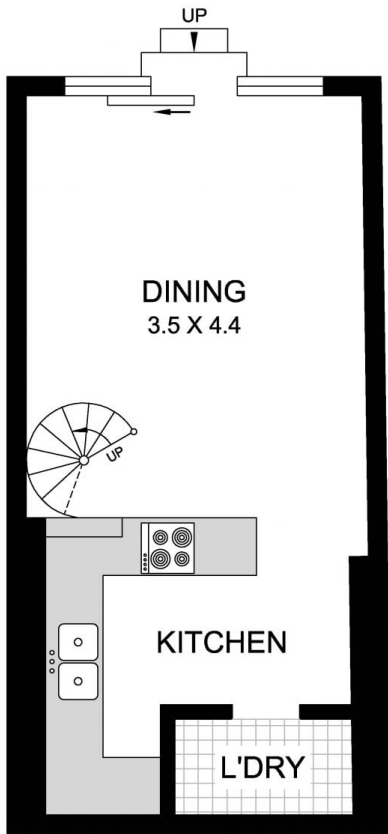
A fantastic opportunity to purchase a solid terrace home with wonderful future prospects, in a peaceful, sought after tree-lined street. The property is in good condition throughout, features generous proportions, a leafy sun-drenched courtyard with car access. A comfortable home with excellent potential to improve and recreate to fully maximise for contemporary living.

- \*Open living spaces and separate dining
- \*Spacious bedroom with balcony and built-in robe
- \*Private garden courtyard with rear lane car access
- \*Stroll to Glebe village cafes, city buses, light rail and the soon to be redeveloped Blackwattle Bay foreshore

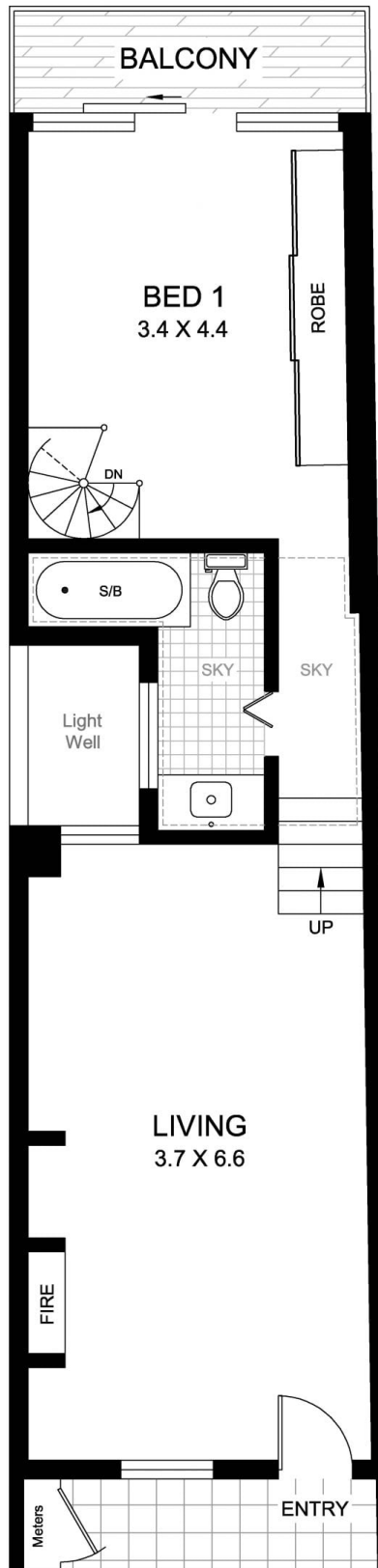
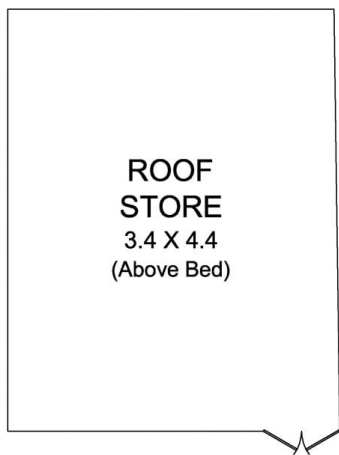
**Type** : House  
**Land Size** : 103 sqm  
**View** : <https://www.recoproperty.com.au/8065557>



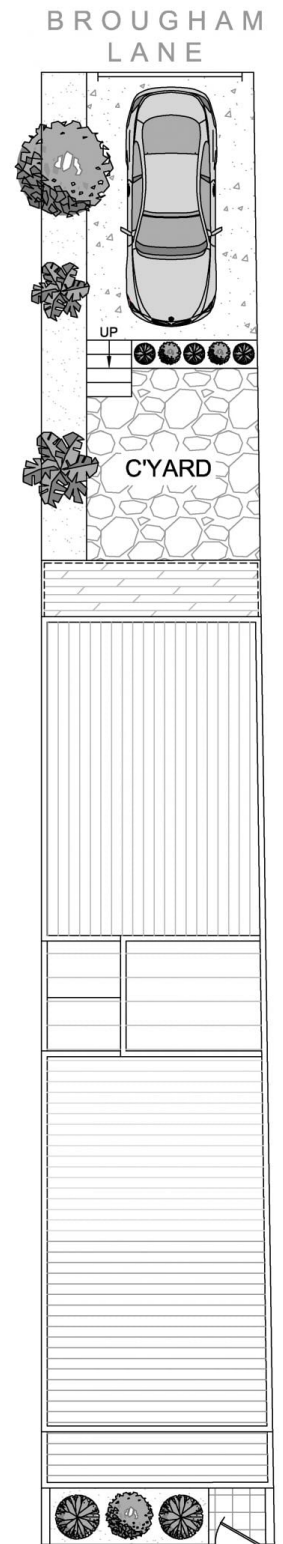
**Junianto Lianto**  
**02 8357 3377**



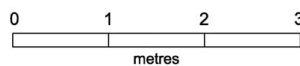
LOWER LEVEL



UPPER LEVEL



SITE PLAN  
(at reduced scale)



All information contained herein is gathered from sources we believe to be reliable. However, we cannot guarantee its accuracy and interested persons should rely on their own enquiries. Dimensions are approximate.

**49 GOTTENHAM STREET  
GLEBE**