



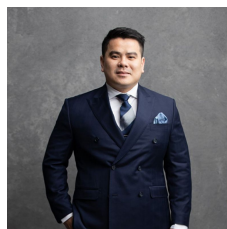
10 Colbourne Street GLEBE NSW

2  1 

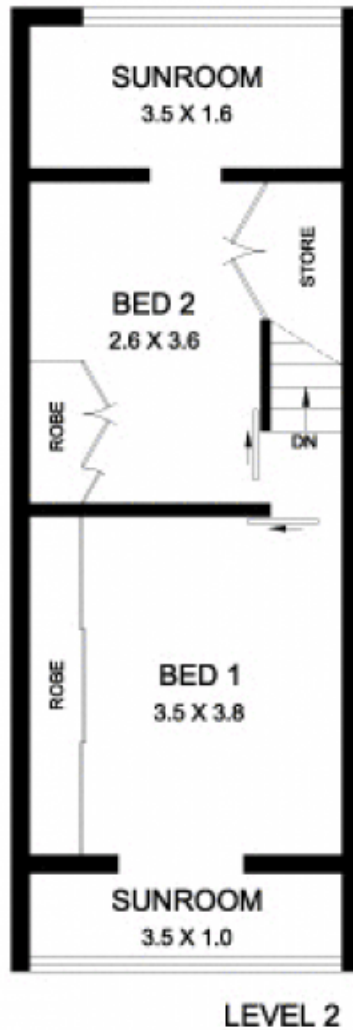
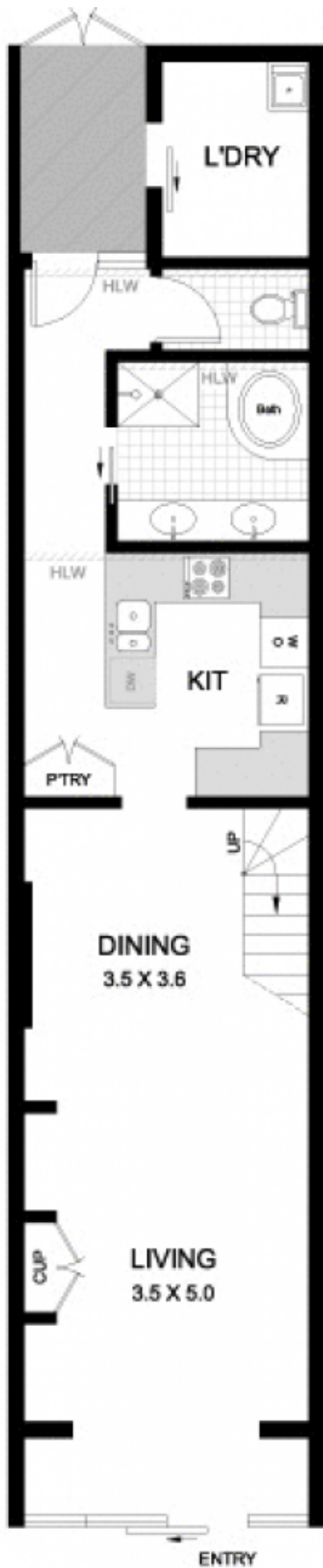
Offered for the first time since the 1920s, this sturdy mid-Victorian terrace is instantly liveable and presents a remarkable opportunity to add significant value in a great location. There's plenty of space to work with, the home includes a pool and it enjoys an ultra-convenient setting mere minutes from the city.

Combined lounge/dining with air conditioning
 Neat, functional kitchen including dishwasher
 2 dbl beds with b-ins, one has sunroom/study
 Private front courtyard plus a pool at the rear
 Full bathroom, w/c and laundry both separate
 Stroll to cafes, Fish Market, light rail and CBD

Type : House
Land Size : 113 sqm
View : <https://www.recoproperty.com.au/8065565>



Junianto Lianto
 02 8357 3377



10 COLBOURNE STREET

GLEBE

PLANS SHOWN ARE ONLY INDICATIVE OF LAYOUT.
DIMENSIONS ARE APPROXIMATE

0 1 3
SCALE BAR in metres



METRO FLOORPLANS
0418 223 433



Garry White

FIRST NATIONAL REAL ESTATE