



**27/23 Charles Street FIVE DOCK NSW**

2  1  2 

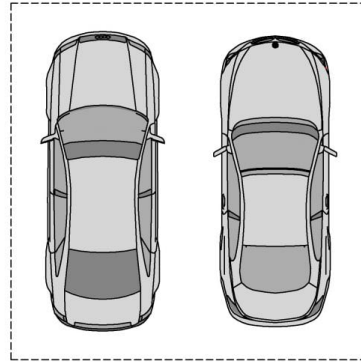
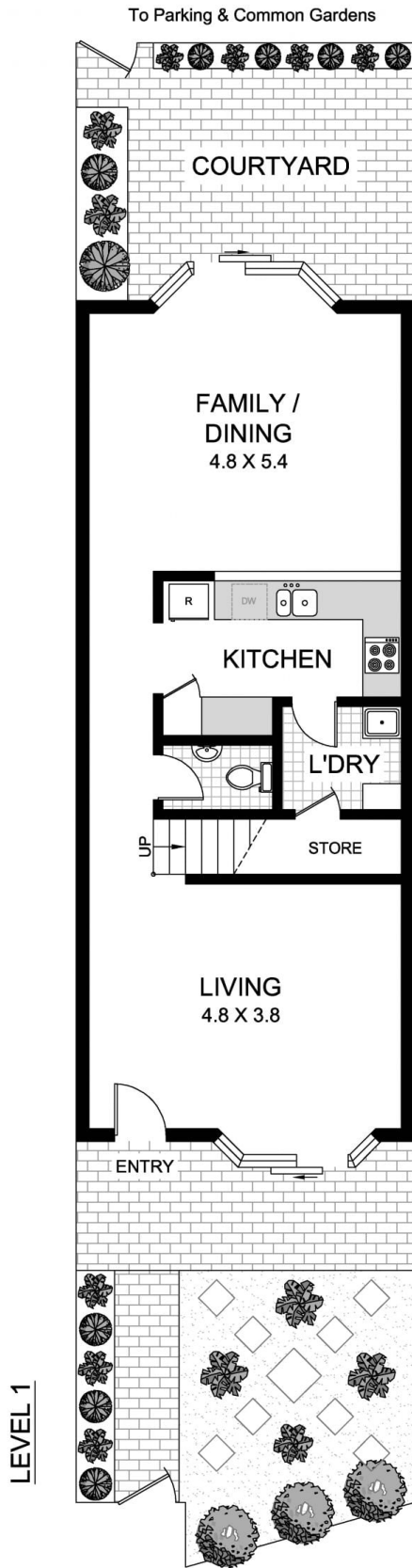
This classic terrace style home is invitingly well presented with generously proportioned interiors and offers marvellous easy care living. It is positioned in a peaceful cul-de-sac location of manicured gardens, glorious northerly aspect and is wonderfully convenient to Five Dock and Abbotsford village cafes.

**Type** : House  
**Land Size** : 194 sqm  
**View** : <https://www.recoproperty.com.au/8065585>

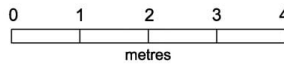
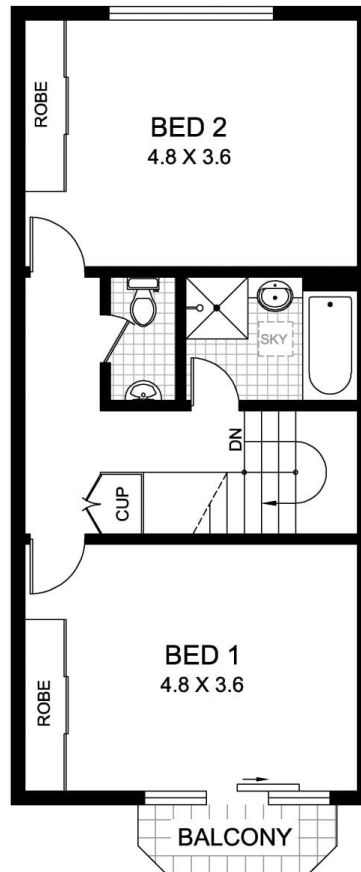
- \*Gorgeous private front garden entry
- \*Separate sun-drenched lounge to large open living-dining
- \*Fully fenced rear garden courtyard opens to lush grassed common
- \*Two over-sized bedrooms with B.I. Robes
- \*Secure double car space on title
- \*Walk to all amenities including city buses



**Junianto Lianto**  
**02 8357 3377**



**SECURITY CARSPACES**



This plan is for illustrative purposes only and dimensions are approximate. It does not constitute part of any legal document or commercial contract for the sale or lease of this property.

**27/23 CHARLES STREET  
FIVE DOCK**