



**25/42 Lombard Street GLEBE NSW**

3  2  2 

This delightful apartment located in the sought after Lombard Estate is perfectly positioned to offer a wonderfully convenient lifestyle and the best of Glebe Village living. From the peaceful cul-de-sac location it is an easy stroll to Glebe Point Road cafes, light rail and the Blackwattle Bay foreshore.

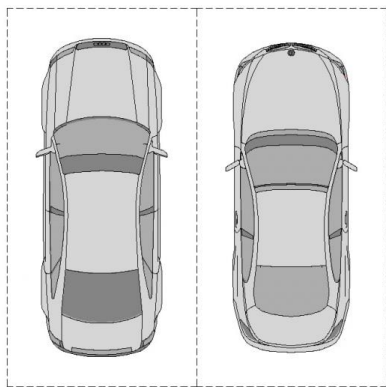
- \*Spacious living areas open on to sunny north-easterly balcony with leafy park outlook
- \*Generously proportioned bedrooms with built-in robes, master with full en-suite and balcony
- \*Secure double car parking plus storage on title
- \*Available for immediate occupation or with quality long term tenants
- \*Tremendous future potential as a sound blue chip

**Type** : Apartment  
**Building Size** : 125 sqm  
**Land Size** : 159 sqm  
**View** : <https://www.recoproperty.com.au/8065587>



**Junianto Lianto**  
**02 8357 3377**

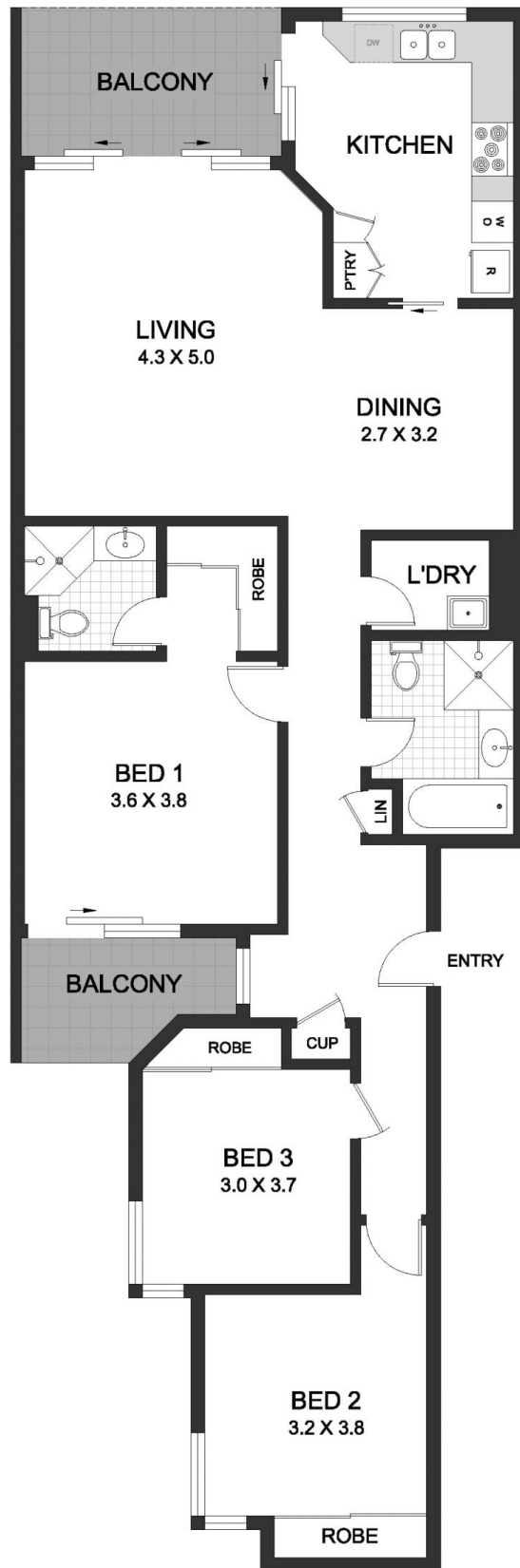
[For full version visit the website](#)



SECURITY CARSPACES

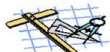


STORE



25/42 LOMBARD STREET  
GLEBE

This plan is for illustrative purposes only and dimensions are approximate. It does not constitute part of any legal document or commercial contract for the sale or lease of this property.



METRO FLOORPLANS  
0418 223 433