



6/41 Gottenham Street GLEBE NSW

1  1  1 

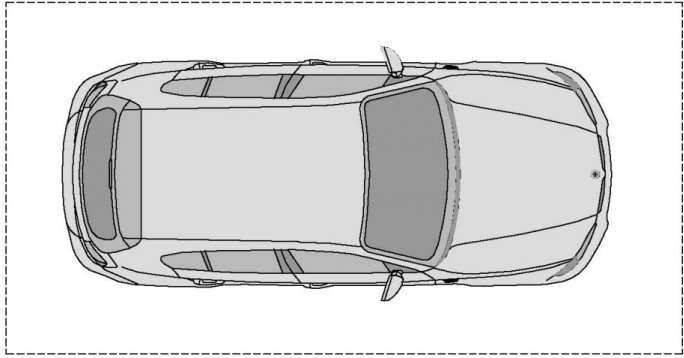
Conveniently located in the heart of Glebe this light and bright one bedroom apartment offers first home buyers or investors a fantastic opportunity to secure an affordable entry into the Glebe market. The property has been well maintained and is showing immediate returns in an up and coming city fringe precinct.

Type : Apartment
Land Size : 48 sqm
View : <https://www.recoproperty.com.au/8065588>

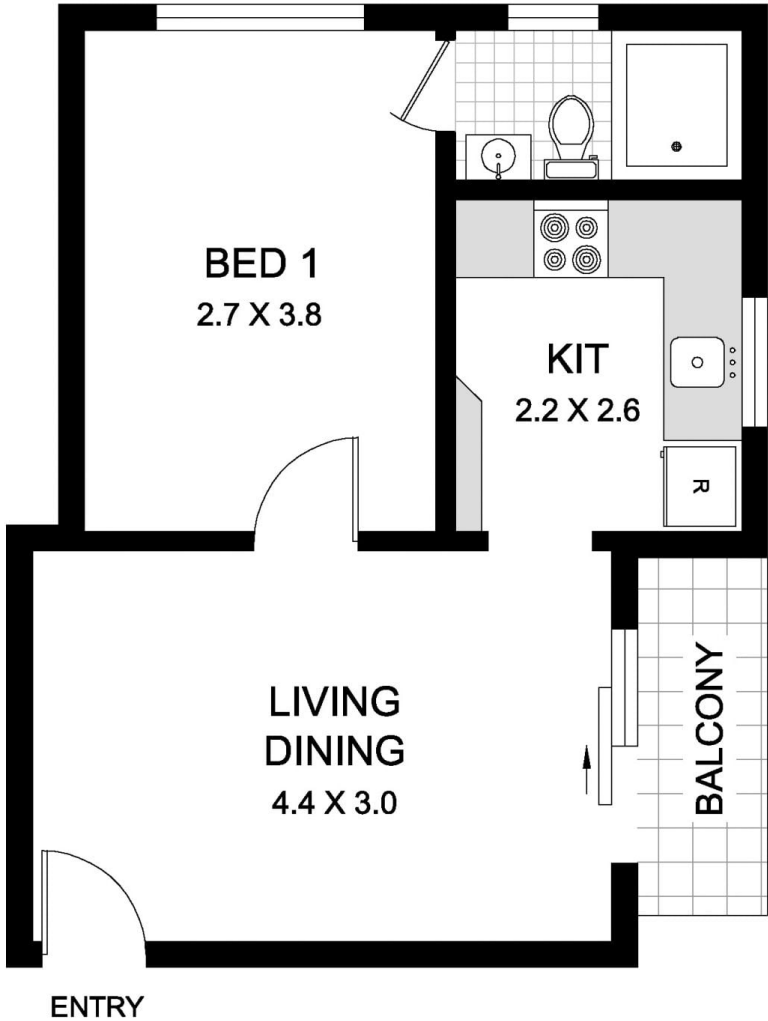
- * Located on first floor of small walk-up block
- * Living opens to balcony, spacious bedroom
- * Solid full brick construction, car space on title
- * Stroll to Glebe village, light rail service, Blackwattle Bay
- * Astute investment or ideal inner-city accommodation



Junianto Lianto
02 8357 3377



CARSPACE



6/14 GOTTENHAM STREET GLEBE

PLANS SHOWN ARE ONLY INDICATIVE OF LAYOUT. DIMENSIONS ARE APPROXIMATE



METRO FLOORPLANS 0418 223 433