



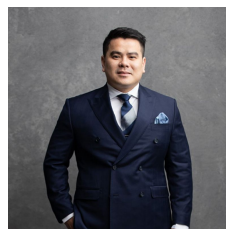
### 273 Glebe Point Road GLEBE NSW

5  3 

Stately Palmerstone Terrace c.1882 is a grandly proportioned home over three levels with expansive city views and retains much of its traditional character and style. An immaculately maintained house ready for updating into a true family sized home in the most desirable of inner-city village locations. The property also offers fantastic investment potential very suitable for multiple occupancy leasing.

- \* Separate formal living and dining with fireplaces and polished timber floors
- \* Five large bedrooms, enormous master, three bathrooms
- \* Extensive original features intact throughout, detailed ceiling roses, marble fireplaces

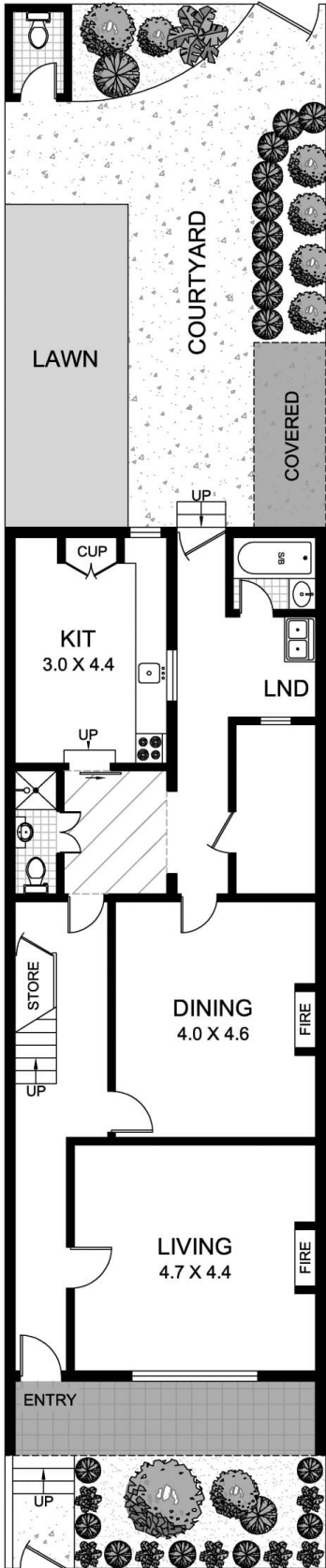
**Type** : House  
**Land Size** : 183 sqm  
**View** : <https://www.recoproperty.com.au/8065593>



**Junianto Lianto**  
**02 8357 3377**

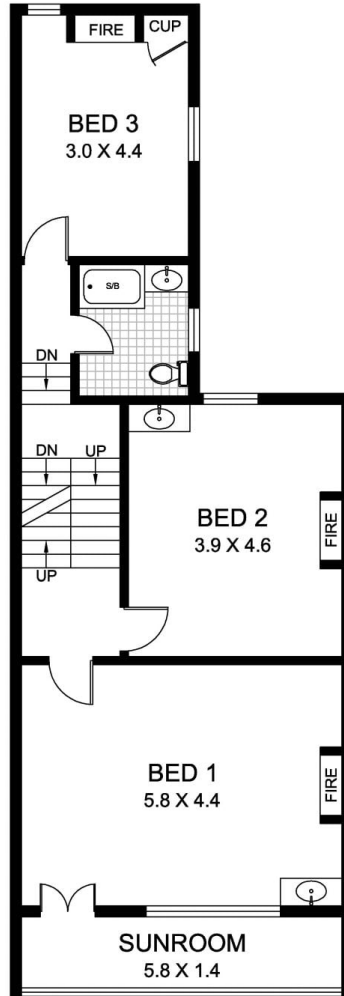
[For full version visit the website](https://www.recoproperty.com.au)

LOMBARD LANE

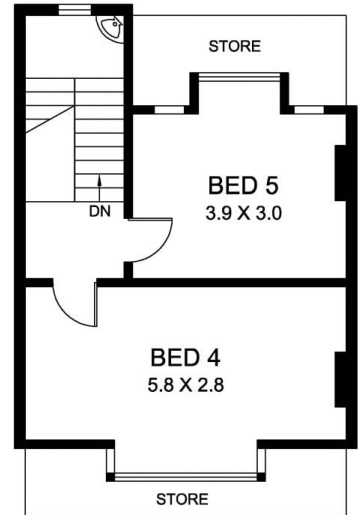


GLEBE POINT ROAD

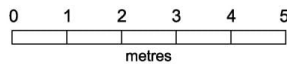
LEVEL 1



LEVEL 2



LEVEL 3



273 GLEBE POINT ROAD  
GLEBE

This plan is for illustrative purposes only and dimensions are approximate. It does not constitute part of any legal document or commercial contract for the sale or lease of this property.