



**11/8-12 Sheehy Street GLEBE NSW**

2  1  1 

Located in a peaceful tree-lined cul-de-sac setting just metres from Blackwattle Bay and harbourside parklands, this entry level two bedroom apartment offers ideal lifestyle and inner-city convenience.

- \* Solid full brick walk-up security block with minimal stairs
  - \* Two bedrooms with built-ins, balcony, aircon
  - \* Open bright living space
  - \* Renovated kitchen with internal laundry
  - \* Freshly painted throughout
  - \* Secure undercover parking plus separate storage
  - \* Stroll to new fishmarket development, shops, cafes
  - \* Ready to occupy or lease out immediately
- An entry level apartment offering all the features without

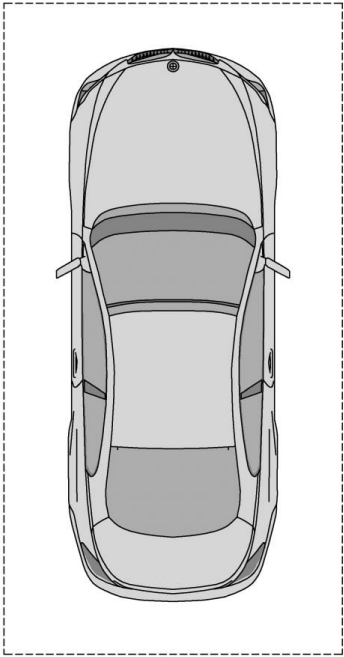
**Type** : Apartment  
**Land Size** : 66 sqm  
**View** : <https://www.recoproperty.com.au/8065602>



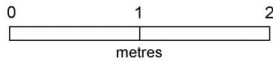
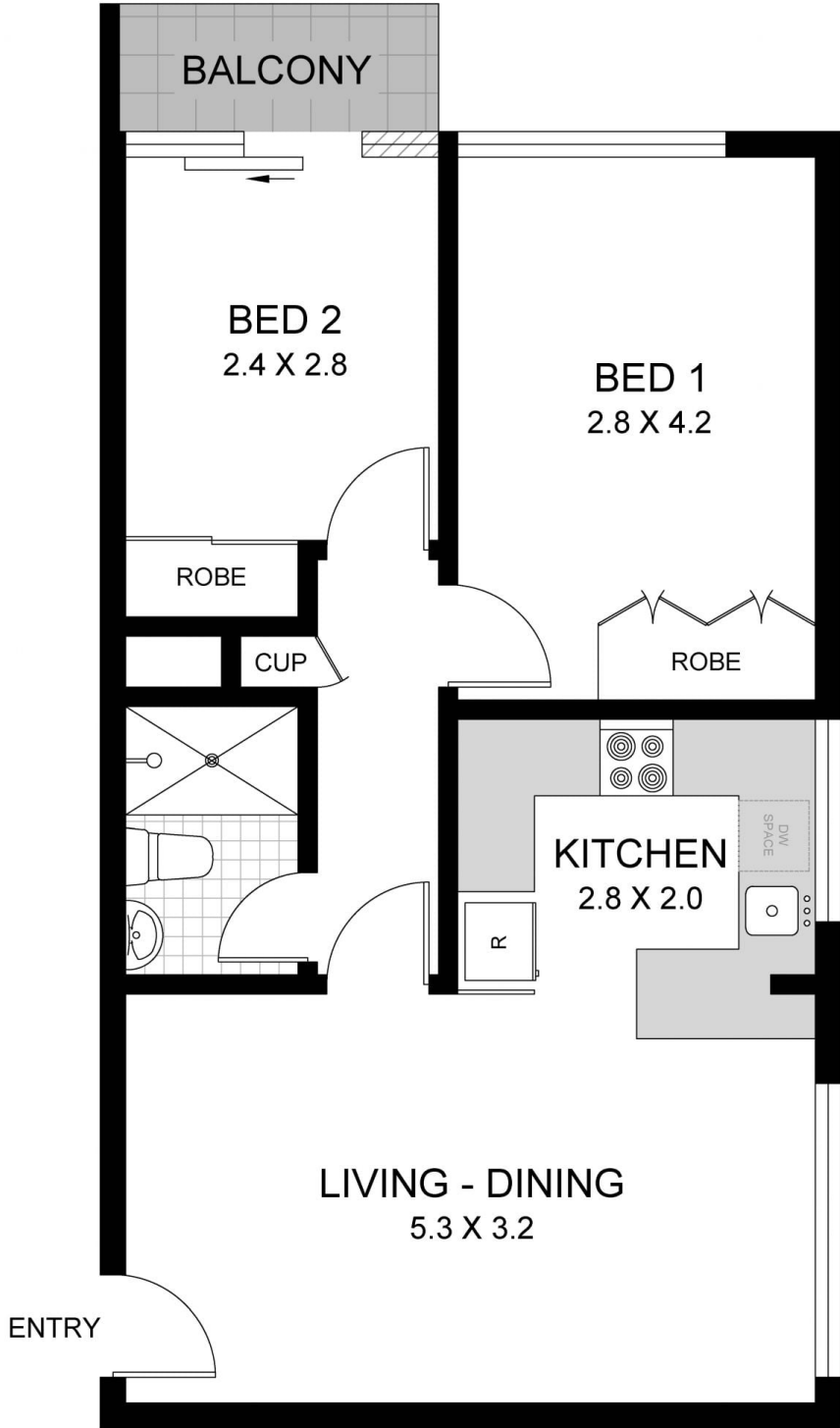
**Junianto Lianto**  
**02 8357 3377**

[For full version visit the website](#)

**STORE**  
2m<sup>2</sup>



**COVERED  
CARSPACE**  
13m<sup>2</sup>



This plan is for illustrative purposes only and dimensions are approximate. It does not constitute part of any legal document or commercial contract for the sale or lease of this property.

**11/8-12 SHEEHY STREET  
GLEBE**