



**9/278-284 Sussex Street SYDNEY NSW**

1  1 

This particularly spacious and immaculately presented large one bedroom apartment offers affordable city living and a solid property investment in a high demand locale. Situated behind Town Hall and St Andrews in the heart of the CBD the apartment is just a short stroll to the best of the city's amenities, Townhall Station, Chinatown, Darling Harbour and QVB.

A safe and solid hassle-free property investment available for the first time since built.

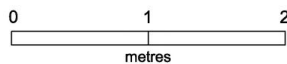
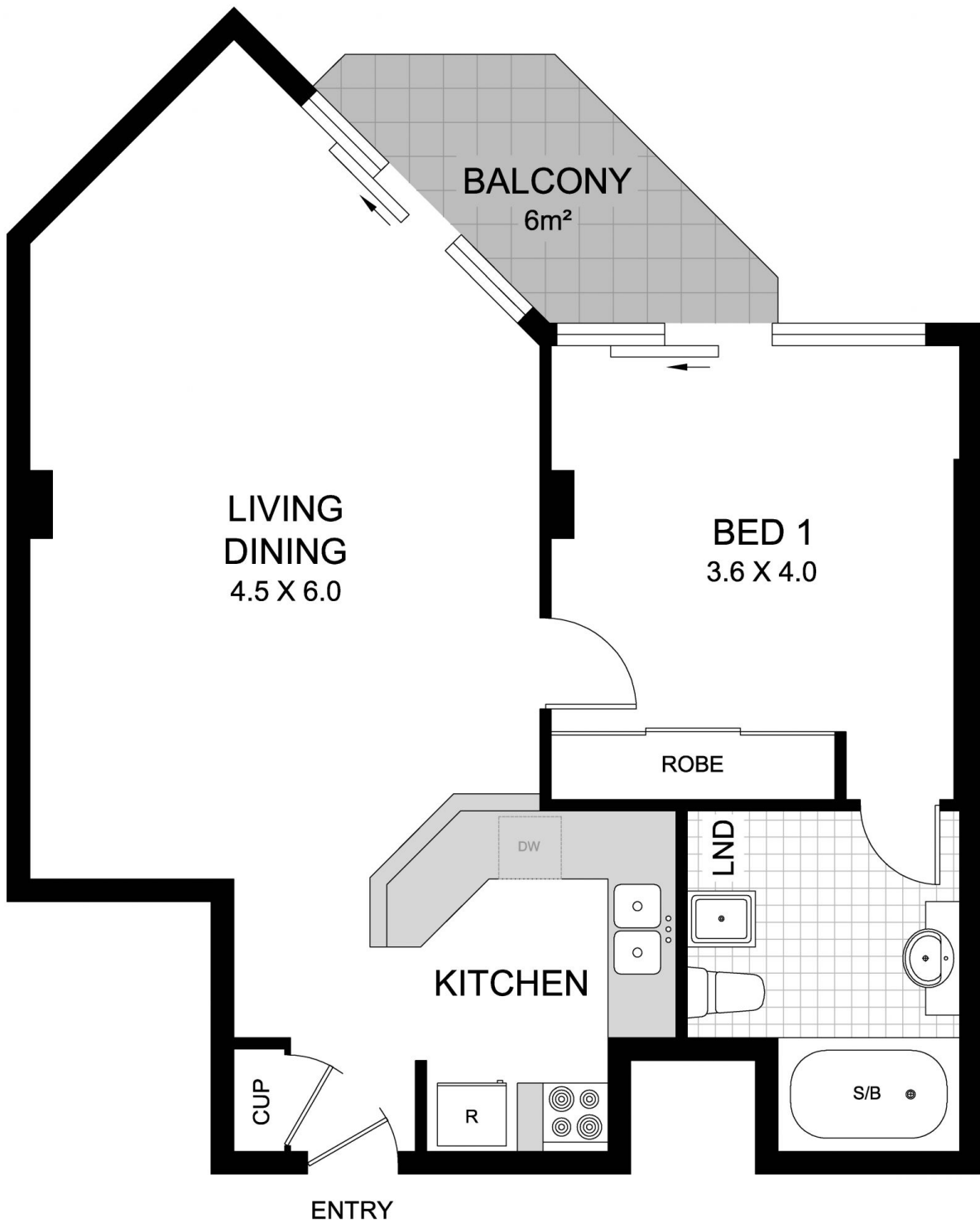
- \* Spacious open living leads to balcony
- \* Extra large bedroom with new custom built-in robe
- \* New carpet, paint and appliances
- \* Enormous rooftop terrace with views to Darling Harbour

**Type** : Apartment  
**Land Size** : 66 sqm  
**View** : <https://www.recoproperty.com.au/8065616>



**Junianto Lianto**  
**02 8357 3377**

[For full version visit the website](#)



**9/278 SUSSEX STREET  
SYDNEY**

This plan is for illustrative purposes only and dimensions are approximate. It does not constitute part of any legal document or commercial contract for the sale or lease of this property.