



### 132/1C Vangelis Street Rouse Hill NSW

1  1  1 

Strategically positioned, this apartment offers proximity to the new Sydney Metro high-frequency railway, Rouse Hill Town Centre, local parklands, playgrounds, and the upcoming Rouse Hill Public Hospital, ensuring ultimate convenience.

#### Key Features:

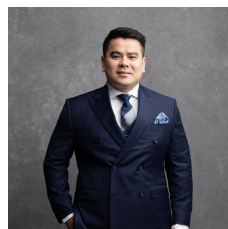
- Premium Bosch appliances in the kitchen.
- Ducted air-conditioning throughout.
- Timber Flooring in Living Area
- Exceptional design and high-end finishes by renowned architects DKO.

#### Location Highlights:

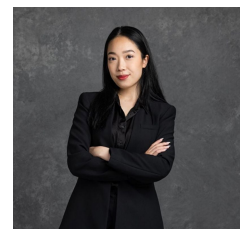
[For full version visit the website](#)

**Type** : Apartment

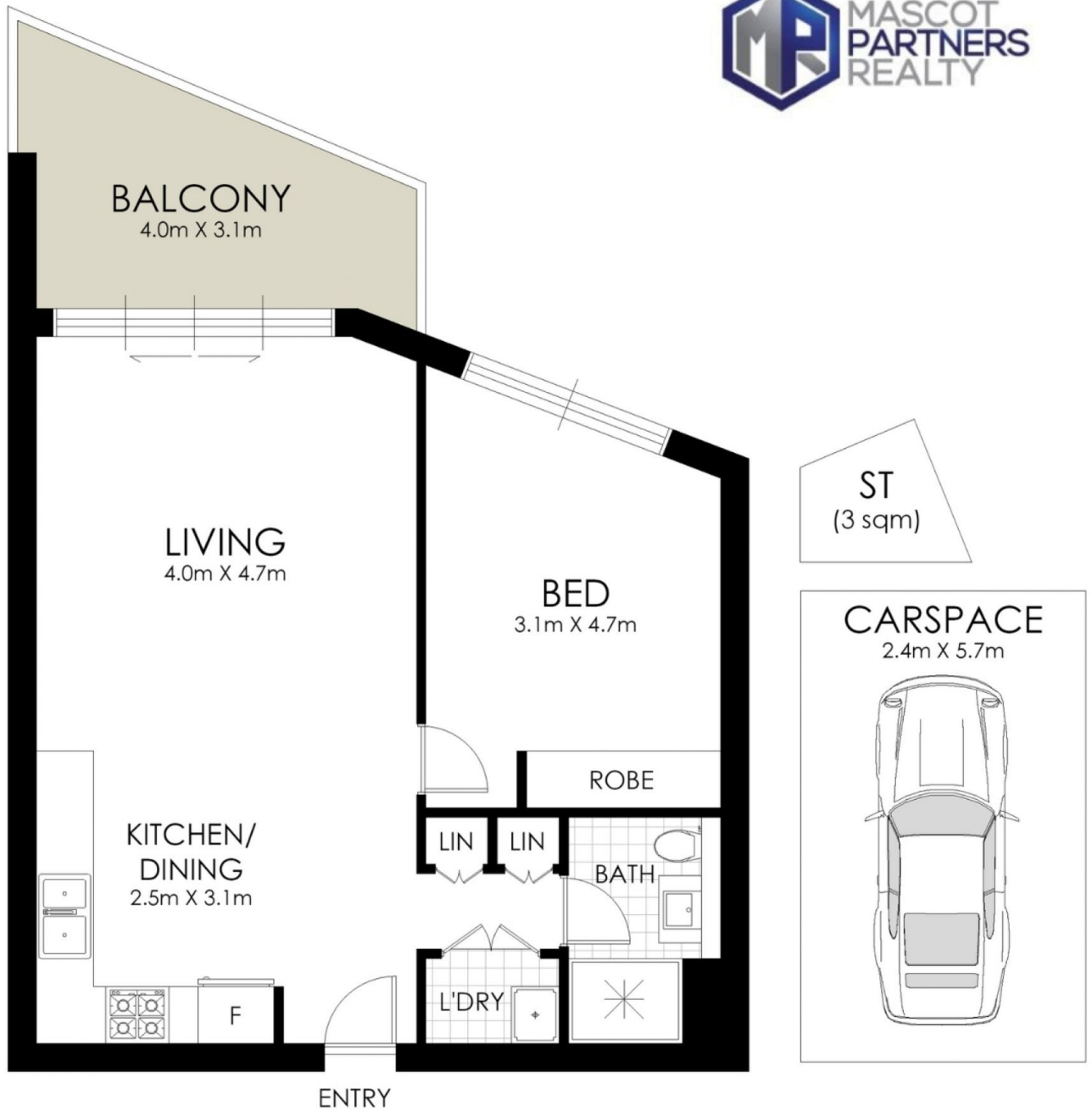
**View** : <https://www.recoproperty.com.au/8084793>



**Junianto Junianto**  
02 8357 3377



**Kaylee Ho**  
02 8357 3377



## FLOOR PLAN



135/1C Vangelis Street, Rouse Hill

**WARNING: DISCLAIMER** This information is not to be relied upon. It is strictly used for marketing and illustration purposes only. All measurements are approximate. Not to scale. No liability accepted. You must rely on your own inquiries and seek advice from your solicitor. Floor plan by [cnkplan@cnkplan.com.au](mailto:cnkplan@cnkplan.com.au) / [www.cnkplan.com.au](http://www.cnkplan.com.au)