




**1240/6 Etherden Walk Mascot NSW**

2  2  1 

Experience modern luxury in this thoughtfully crafted two-bedroom apartment, situated on the 12th floor of a stylish residential complex. Relish the convenience of having shops, cafes, and restaurants right at your doorstep.

Located just minutes from Sydney's vibrant CBD, this apartment offers easy access to the city's lively atmosphere, while also being close to Sydney Airport, UNSW, and the Eastern beaches. Experience a lifestyle of sophistication and convenience with this perfect blend of style and accessibility.

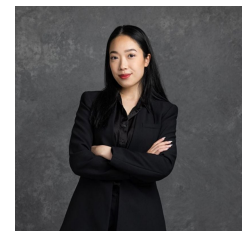
Property Highlights:

[For full version visit the website](#)

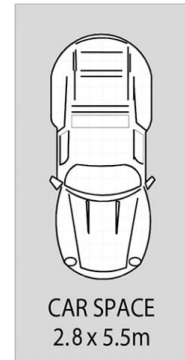
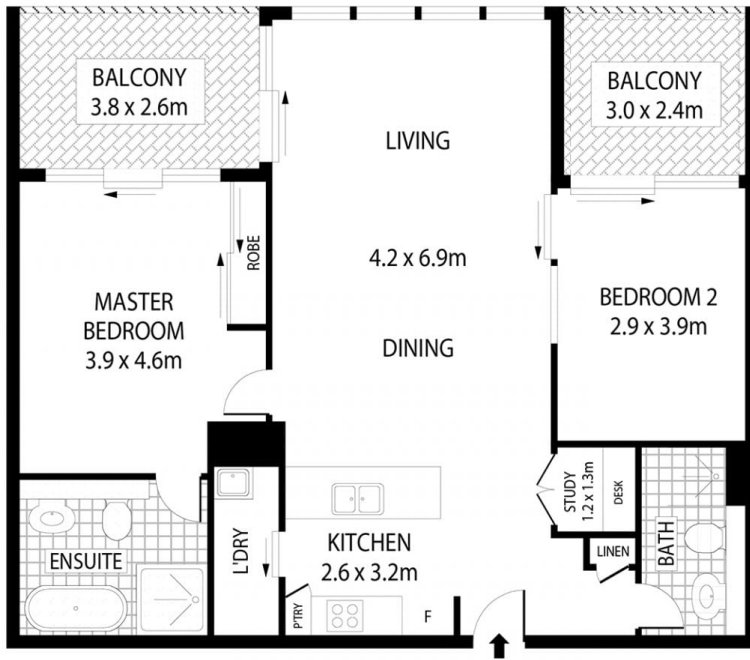
**Type** : Apartment  
**Price** : \$ 987,000  
**View** : <https://www.recoproperty.com.au/8098573>



**Junianto Junianto**  
 02 8357 3377



**Kaylee Ho**  
 02 8357 3377



Level 12



INTERNAL : 89sqm (approx)



This floor plan is for marketing purposes and is to be used as a guide only. All efforts have been made to ensure its accuracy although interested parties are urged to rely on their own enquiries.