
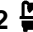



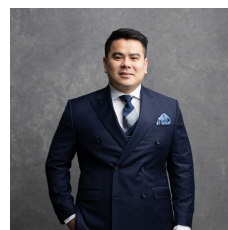
### 410/364 Canterbury Road Canterbury NSW

2  2  2 

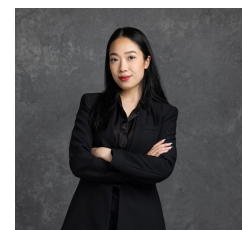
Situated in a secure building with access via Onslow Street, it offers exclusive rooftop amenities, including a covered BBQ area, kids playground, and stunning panoramic views of the city and surrounding district. Conveniently located close to public transport options-bus routes and train services at Canterbury Station-along with cafes, a supermarket, and the scenic Cooks River parklands.

**Type** : Apartment  
**Price** : \$ 720,000  
**View** : <https://www.recoproperty.com.au/8142801>

- Ideally positioned away from the bustle of Canterbury Road
- Two generously sized bedrooms, both featuring built-ins wardrobes
- Expansive lounge and dining area



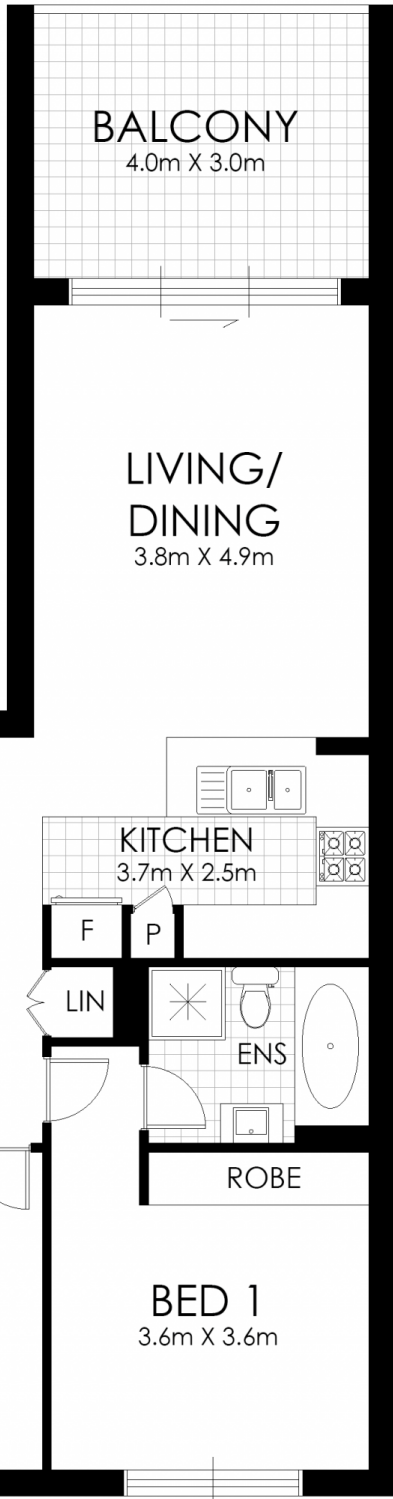
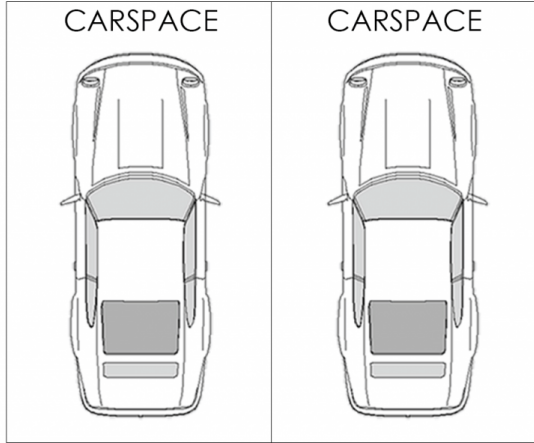
**Junianto Junianto**  
 02 8357 3377



**Kaylee Ho**  
 02 8357 3377

[For full version visit the website](#)

STORAGE  
(3sqm)



# FLOOR PLAN



410/364 Canterbury Road, Canterbury

WARNING: DISCLAIMER This information is not to be relied upon. It is strictly used for marketing and illustration purposes only. All measurements are approximate. Not to scale. No liability accepted. You must rely on your own inquiries and seek advice from your solicitor. Floor plan by [cnkplan@cnkplan.com.au](mailto:cnkplan@cnkplan.com.au) / [www.cnkplan.com.au](http://www.cnkplan.com.au)