



22/2A Forsyth Street Glebe NSW

2  1  1 

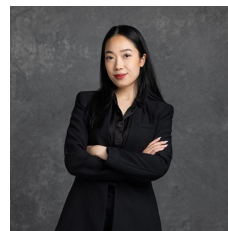
This exceptional 2-bedroom apartment is perfectly positioned in the heart of Glebe, offering a prime location with unparalleled views. North-east facing, the spacious balcony captures an abundance of light and flows effortlessly into the open-plan living and dining areas.

Enjoy panoramic views of the Sydney skyline, with iconic landmarks including the Sydney Harbour Bridge, the Anzac Bridge, and stunning water views stretching across the bay. The apartment's design maximizes natural light and ensures a bright, airy atmosphere throughout, enhancing the lifestyle appeal of this vibrant location.

Conveniently located near the best of Glebe's cafes,

[For full version visit the website](#)

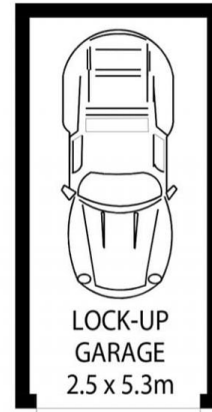
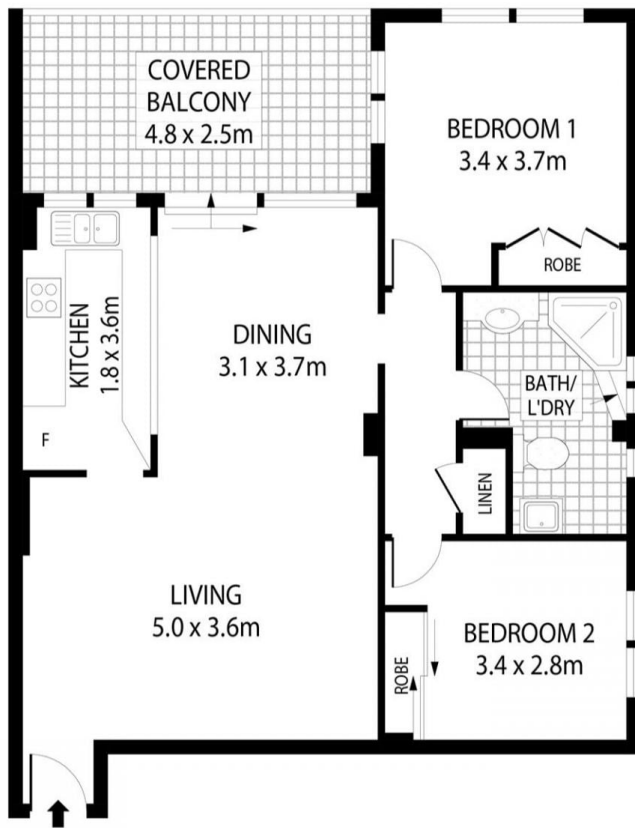
Type : Apartment
Price : \$ 1,545,000
View : <https://www.recoproperty.com.au/8193543>



Kaylee Ho
 02 8357 3377



Junianto Lianto
 02 8357 3377



LEVEL FOUR



This floor plan is for marketing purposes and is to be used as a guide only. All efforts have been made to ensure its accuracy although interested parties are urged to rely on their own enquiries.