

8/115 Wigram Road Glebe NSW

2  2  1 

This stylishly appointed, spacious unfurnished apartment is within the boutique complex "Centennial Apartments" located just minutes to Glebe village cafes, Sydney University campus and Rozelle Bay foreshore only moments from The Tramsheds, city buses and the light rail.

- Generous lounge/dining area flowing to a huge entertainers terrace
- As new paint and carpet
- Two large bedrooms both with built-in robes, main with 2nd courtyard.
- Hardwood bamboo flooring
- Open plan granite gas kitchen with stainless steel appliances

Type : Apartment

View : <https://www.recoproperty.com.au/8226556>

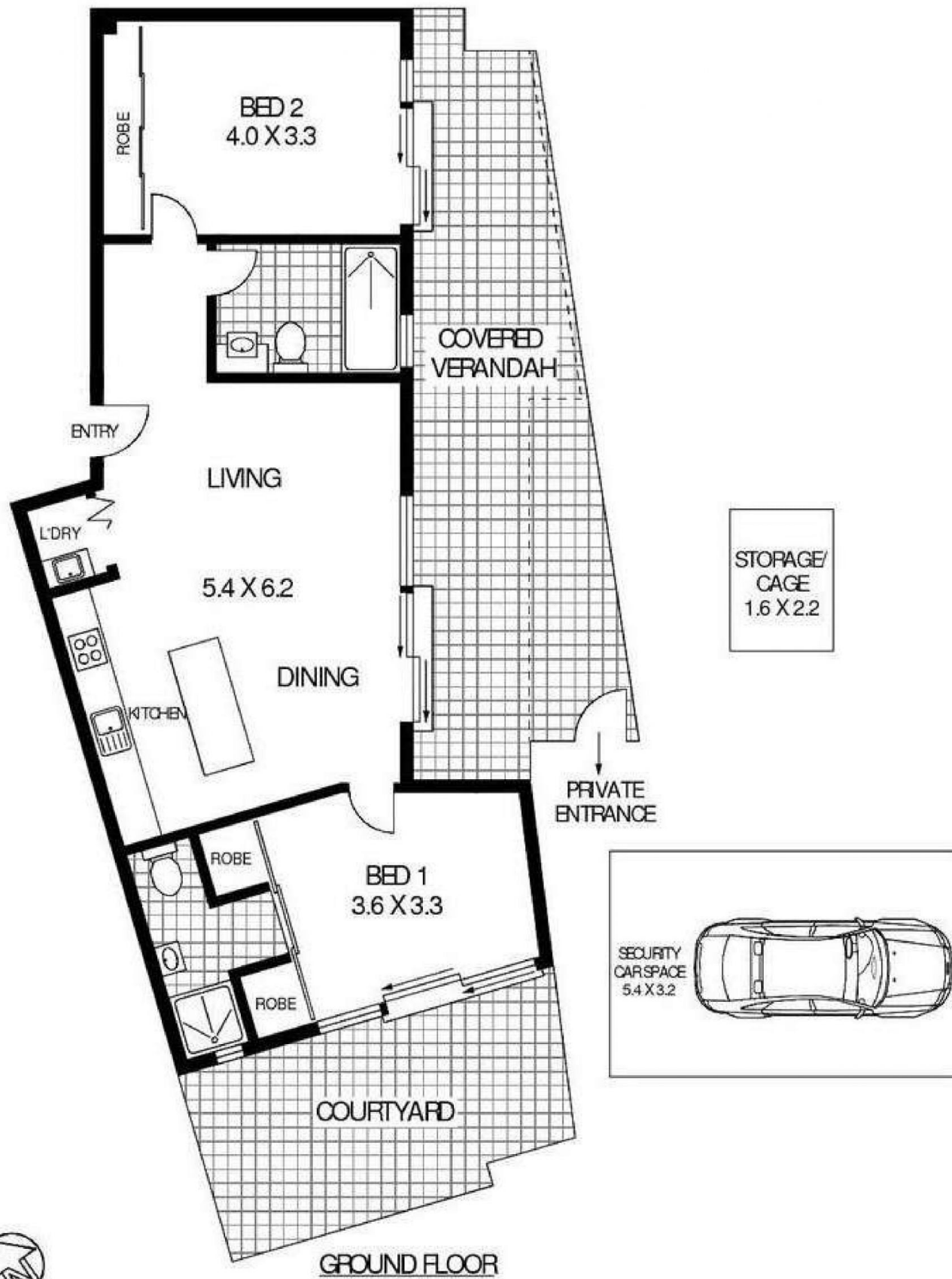


Stephen Widjaja
02 9660 1044



Mari-Anne Wills
02 9660 1044

[For full version visit the website](#)

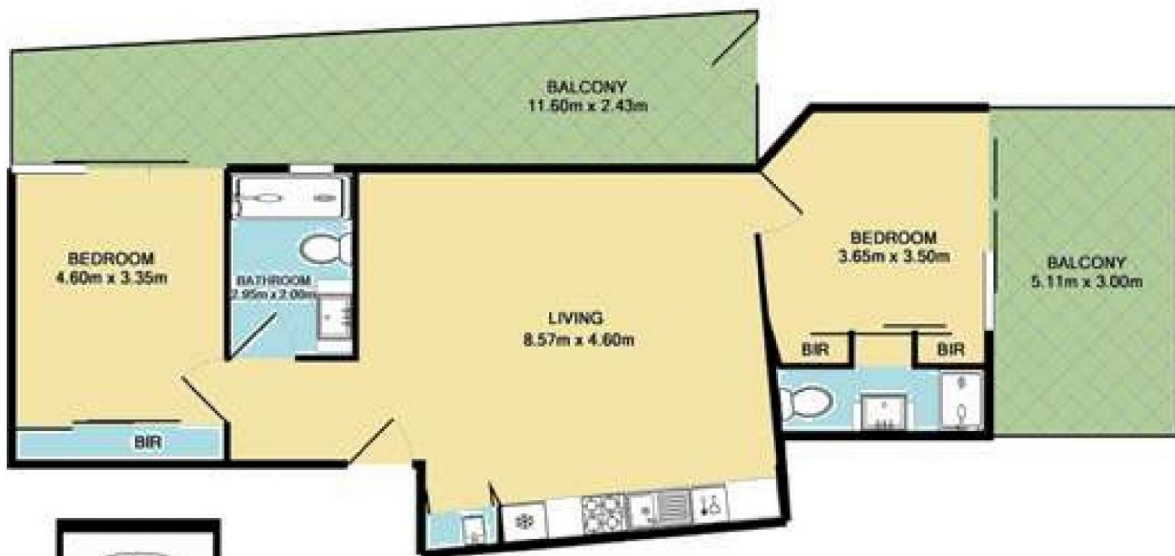


8/115 WIGRAM ROAD

FOREST LODGE

Floor Plan Disclaimer: Mind the Gap (mtg) floor plans/ site plans are intended as an approximate guide only. No representations or warranties of any nature are given or intended and any person using this information other than as a guide should always rely on their own enquiries. Mind the Gap property marketing services/ 1300 133 148/ Photography, Floor plans, Copywriting, Video, Online, Design/ www.mindthegap.com.au

8/115 Wigram Road Glebe



TOTAL APPROX. FLOOR AREA 60m²
LARGE BALCONY, APPROX 28m²
SMALLER BALCONY, APPROX 15m²
STORAGE, APPROX 3m²

TOTAL AREA = 147M² ON TITLE (APPROX)

Measurements are approximate. Not to scale. For illustrative purposes only.

