
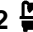





8/115 Wigram Road Glebe NSW

2  2  2 

This spacious stylishly appointed, unfurnished apartment is within the boutique complex "Centennial Apartments" located just minutes to Glebe village cafes, Sydney University campus and Glebe foreshore only moments from The Tramsheds, city buses and the light rail.

- Generous lounge/dining area flowing to a huge entertainers terrace
- Recently painted & carpeted.
- Two large bedrooms both with built-in robes, main with 2nd courtyard.
- Hardwood bamboo flooring
- Open plan granite gas kitchen with stainless steel appliances

Type : Apartment

View : <https://www.recoproperty.com.au/8333780>

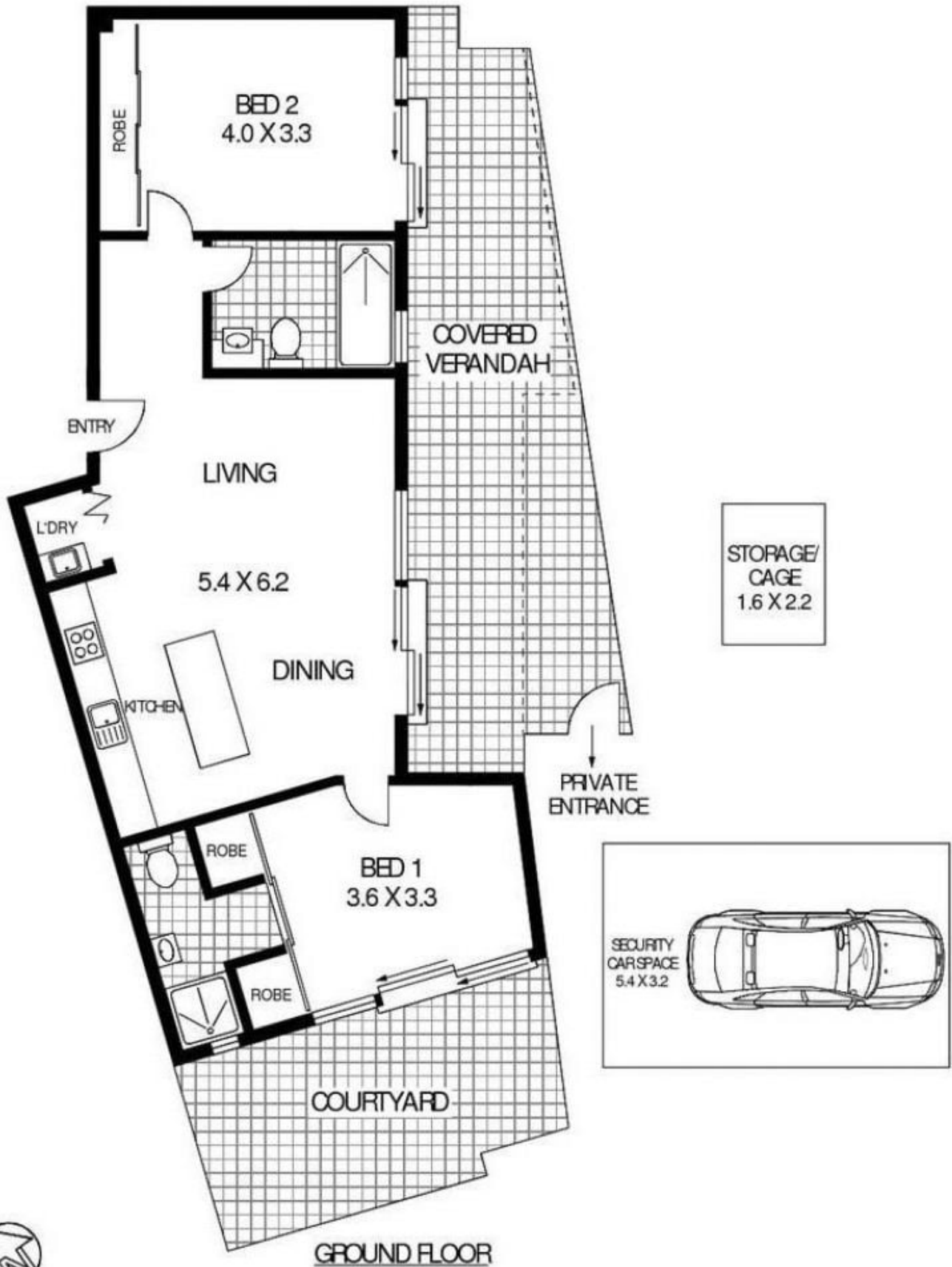


Mari-Anne Wills
02 9660 1044



Boa Lee
02 8537 3377

[For full version visit the website](#)



8/115 WIGRAM ROAD

FOREST LODGE

Floor Plan Disclaimer: Mind the Gap (mtg) floor plans/ site plans are intended as an approximate guide only. No representations or warranties of any nature are given or intended and any person using this information other than as a guide should always rely on their own enquiries. Mind the Gap property marketing services/ 1300 133 145/ Photography, Floor plans, Copywriting, Video, Online, Design/ www.mindthegap.com.au