



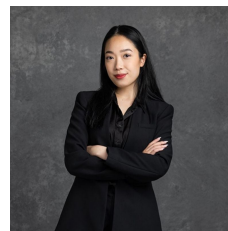
75/11 Wigram Lane Glebe NSW

1  1  1 

With house-like proportions and a seamless flow between indoor and outdoor living, this exceptional 1-bedroom apartment is a true standout in the heart of Glebe. Set within the lush, landscaped surrounds of the sought-after Glebe Gardens complex.

Type : Apartment
Land Size : 95 sqm
View : <https://www.recoproperty.com.au/8344123>

Overlooking tropical gardens from a full-width entertainer's terrace, the apartment blends privacy, tranquility, and convenience. Enjoy access to resort-style amenities including a 25m outdoor pool and a fully equipped gym, while being just moments to village cafés, Glebe Point Road, and the dining destination of Tramsheds.



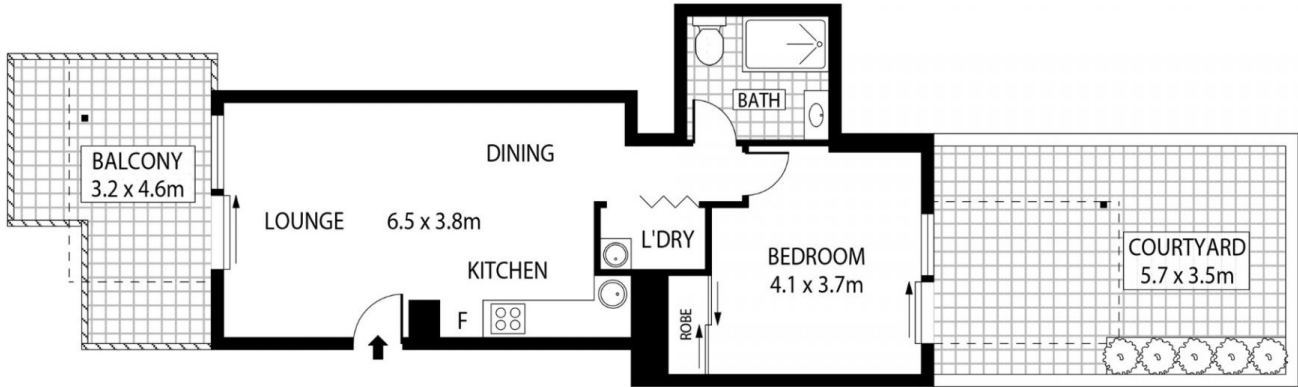
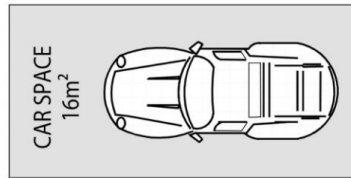
Kaylee Ho
02 8357 3377



Junianto Lianto
02 8357 3377

Apartment Highlights:

[For full version visit the website](#)



This floor plan is for marketing purposes and is to be used as a guide only. All efforts have been made to ensure its accuracy although interested parties are urged to rely on their own enquiries.