



411/2 Sergeant Street Edmondson Park NSW

1  1  1 

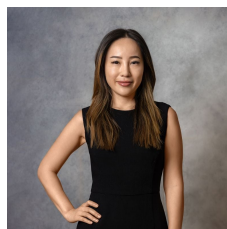
Nestled in the vibrant heart of Ed's Town Centre, this residence places you in the middle of a thriving urban hub. Enjoy the convenience of over 70 retail outlets including Coles, a fresh food market, EAT Street dining precinct, Event Cinemas, iPlay entertainment, and essential everyday services-all just steps from your door.

Features:

- Open-plan living and dining area
- Spacious multi purpose room as a workspace
- Stylish timber-look tile flooring throughout living spaces
- Modern gas kitchen with stone benchtop and s/s appliances
- Full tiled contemporary designer bathroom

Type : Unit

View : <https://www.recoproperty.com.au/8359115>



Boa Lee
02 8537 3377



Stephen Widjaja
02 8357 3377

[For full version visit the website](#)