



1004/600 Railway Parade Hurstville NSW

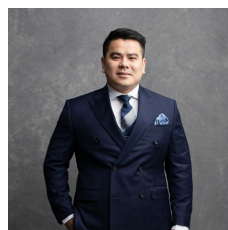
1  1  1 

Located in the iconic Empress Towers, this stylish 1-bedroom apartment offers the perfect blend of modern comfort and unbeatable convenience in the heart of Hurstville.

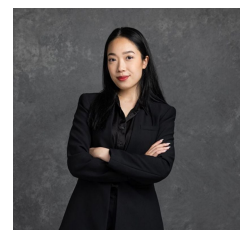
Type : Apartment
Price : \$ 577,000
View : <https://www.recoproperty.com.au/8405327>

Property Features:

- Light-filled open-plan living and dining flowing to a private balcony
- Enjoy Sydney CBD skyline and calming Botany Bay views
- Modern gas kitchen with stone benchtops, electric oven & ample storage
- Generous size bedroom with built-in wardrobe and direct bathroom access
- Contemporary bathroom, internal laundry

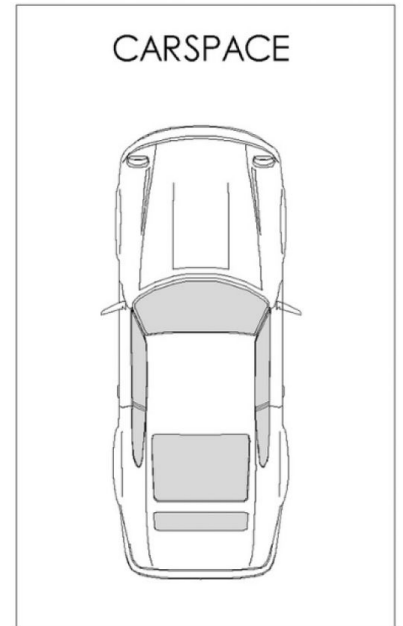
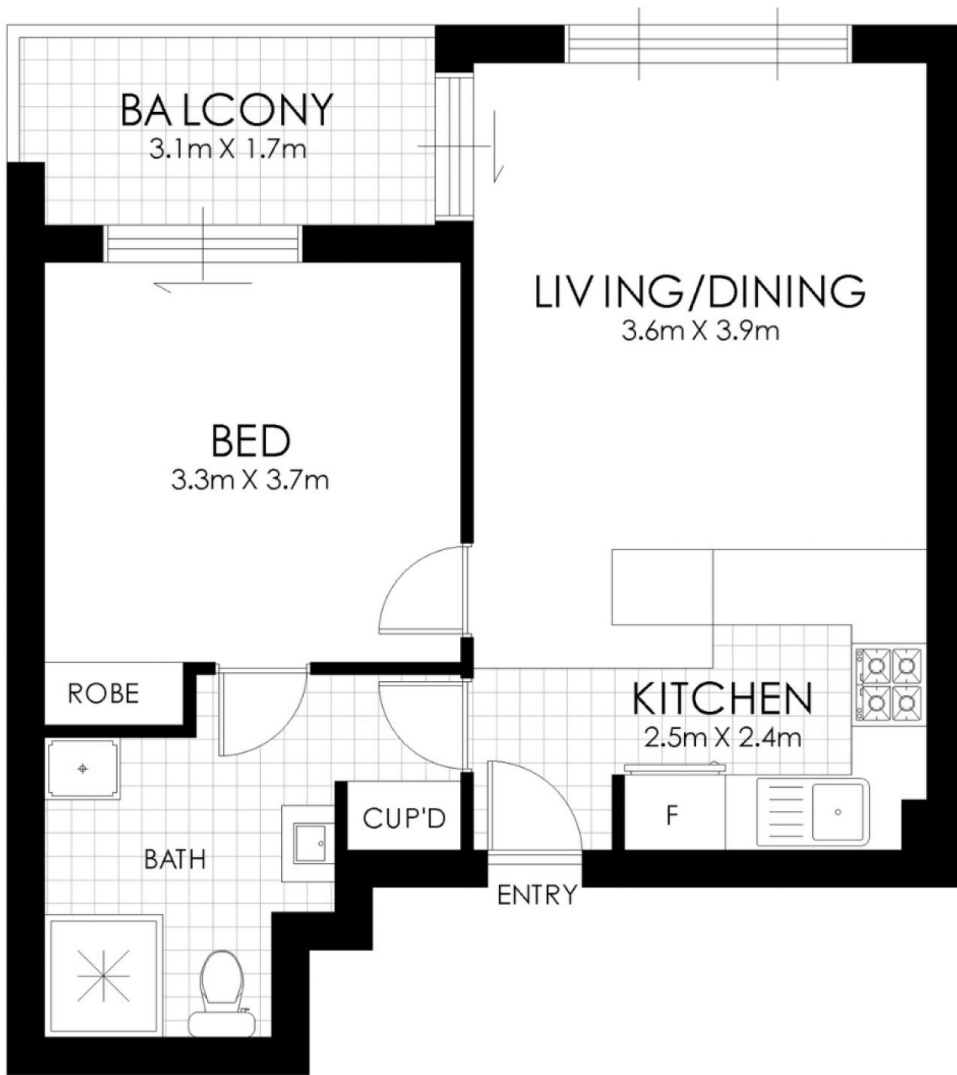


Junianto Junianto
 02 8357 3377



Kaylee Ho
 02 8357 3377

[For full version visit the website](#)



FLOOR PLAN



1004/600 Railway Parade, Hurstville

WARNING: DISCLAIMER This information is not to be relied upon. It is strictly used for marketing and illustration purposes only. All measurements are approximate. Not to scale. No liability accepted. You must rely on your own inquiries and seek advice from your solicitor. Floor plan by cnkplan@cnkplan.com.au / www.cnkplan.com.au