





104/548-568 Canterbury Road Campsie NSW

3  2  1 

Located in a secure and well-maintained complex, this spacious three-bedroom plus study apartment delivers a functional layout, quality finishes, and an easy low-maintenance lifestyle.

Type : Apartment
Price : \$ 777,000
View : <https://www.recoproperty.com.au/8417390>

Enjoy the convenience of being just moments to Clemton Park Village, city buses, local schools, and Campsie's retail and dining precinct.

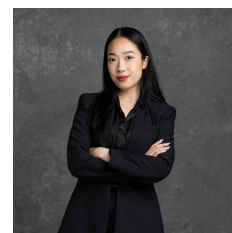
Key Features:

- Generous open-plan living and dining with seamless indoor-outdoor flow
- Modern kitchen with gas cooking, stone benchtops, dishwasher, and ample storage

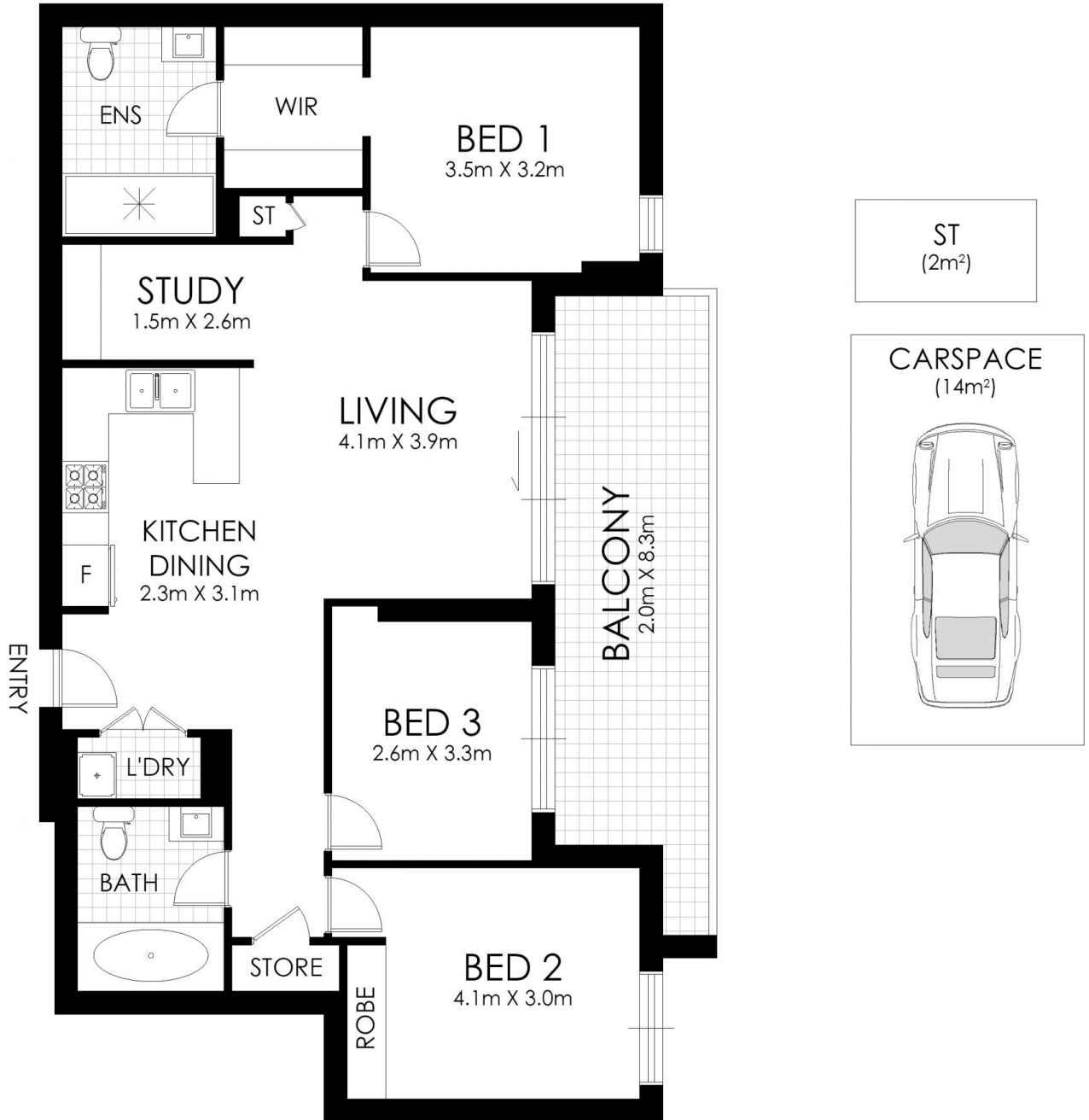
[For full version visit the website](#)



Junianto Junianto
02 8357 3377



Kaylee Ho
02 8357 3377



FLOOR PLAN

104/548-568 Canterbury Rozd, Campsie



Disclaimer: Floor Plan measurements are approximate and are for illustrative purposes only. While we do not doubt the floor plans accuracy, we make no guarantee, warranty or representation as to the accuracy and completeness of the floor plan. You or your advisors should conduct a careful, independent investigation of the property to determine to your satisfaction as to the suitability of the property for your space requirements.