
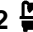





**1002/2A Mark Street Lidcombe NSW**

2  2  2 

Experience contemporary living at its finest in this beautifully presented two-bedroom apartment, perfectly positioned just moments from Lidcombe Train Station, local cafés, restaurants, shops, and everyday conveniences.

**Type** : Apartment  
**Price** : \$ 804,000  
**View** : <https://www.recoproperty.com.au/8555183>

Designed for comfort and style, this modern residence combines practical living with premium finishes, offering an exceptional opportunity for first-home buyers, downsizers, or investors.

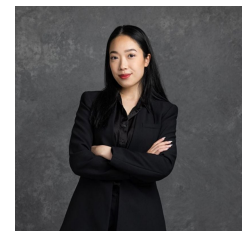
**Property Features:**

- Bright north-facing apartment with excellent natural light and privacy

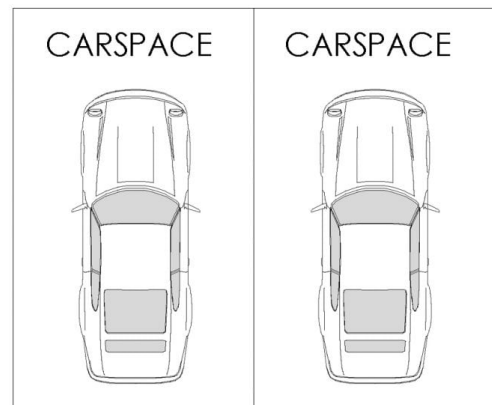
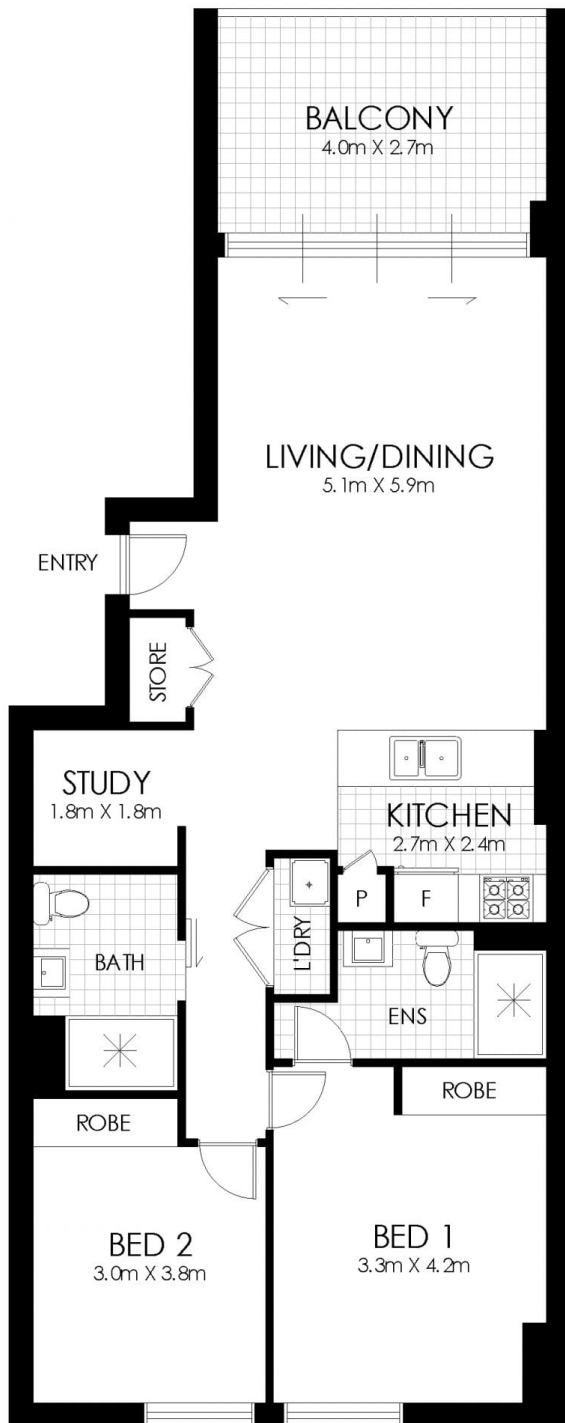
[For full version visit the website](#)



**Junianto Lianto**  
 02 8357 3377



**Kaylee Ho**  
 02 8357 3377



## FLOOR PLAN

1002/2A Mark Street, Lidcombe



*Disclaimer:* Floor Plan measurements are approximate and are for illustrative purposes only. While we do not doubt the floor plans accuracy, we make no guarantee, warranty or representation as to the accuracy and completeness of the floor plan. You or your advisors should conduct a careful, independent investigation of the property to determine to your satisfaction as to the suitability of the property for your space requirements.