



43/42 Lombard Street Glebe NSW

3  2  2 

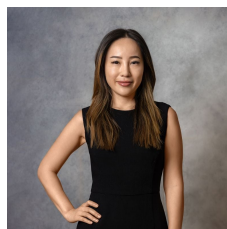
Positioned in a peaceful cul-de-sac on the top floor of the sought-after Lombard Estate, this superb three-bedroom, two-bathroom executive apartment offers a rare combination of city skyline views, a tranquil parkside setting and exceptional convenience.

Spacious open-plan living and dining areas feature elegant timber parquet floors and flow seamlessly onto a large balcony. The modern granite and stainless-steel kitchen includes gas cooking. All bedrooms are fitted with built-in wardrobes, with the master enjoying an ensuite and private balcony.

Additional features include a huge automatic double

Type : Apartment

View : <https://www.recoproperty.com.au/8572925>



Boa Lee
02 8537 3377

[For full version visit the website](#)