
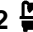





13/16 Leichhardt Street Glebe NSW

2  2  2 

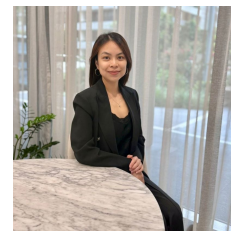
Embrace the rare combination of city convenience and tranquil waterside living at Blackwattle Bay. This beautifully updated home has been thoughtfully renovated with a brand-new kitchen, new timber flooring, fresh paint throughout, and a stylishly renovated laundry, creating a modern, move-in-ready sanctuary.

Sunlit open-plan living and dining areas flow seamlessly to a large balcony with peaceful, tree-filtered water views-perfect for morning coffee, evening drinks, or unwinding after a busy day. Well-proportioned bedrooms and two contemporary bathrooms provide comfort for residents and guests, while two secure lock-up garages and abundant storage complete this highly functional

Type : Apartment
Price : \$ 1,720,000
View : <https://www.recoproperty.com.au/8610880>

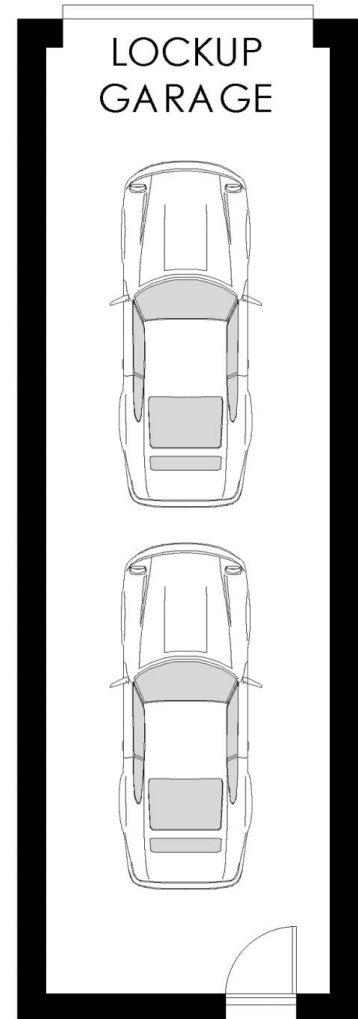
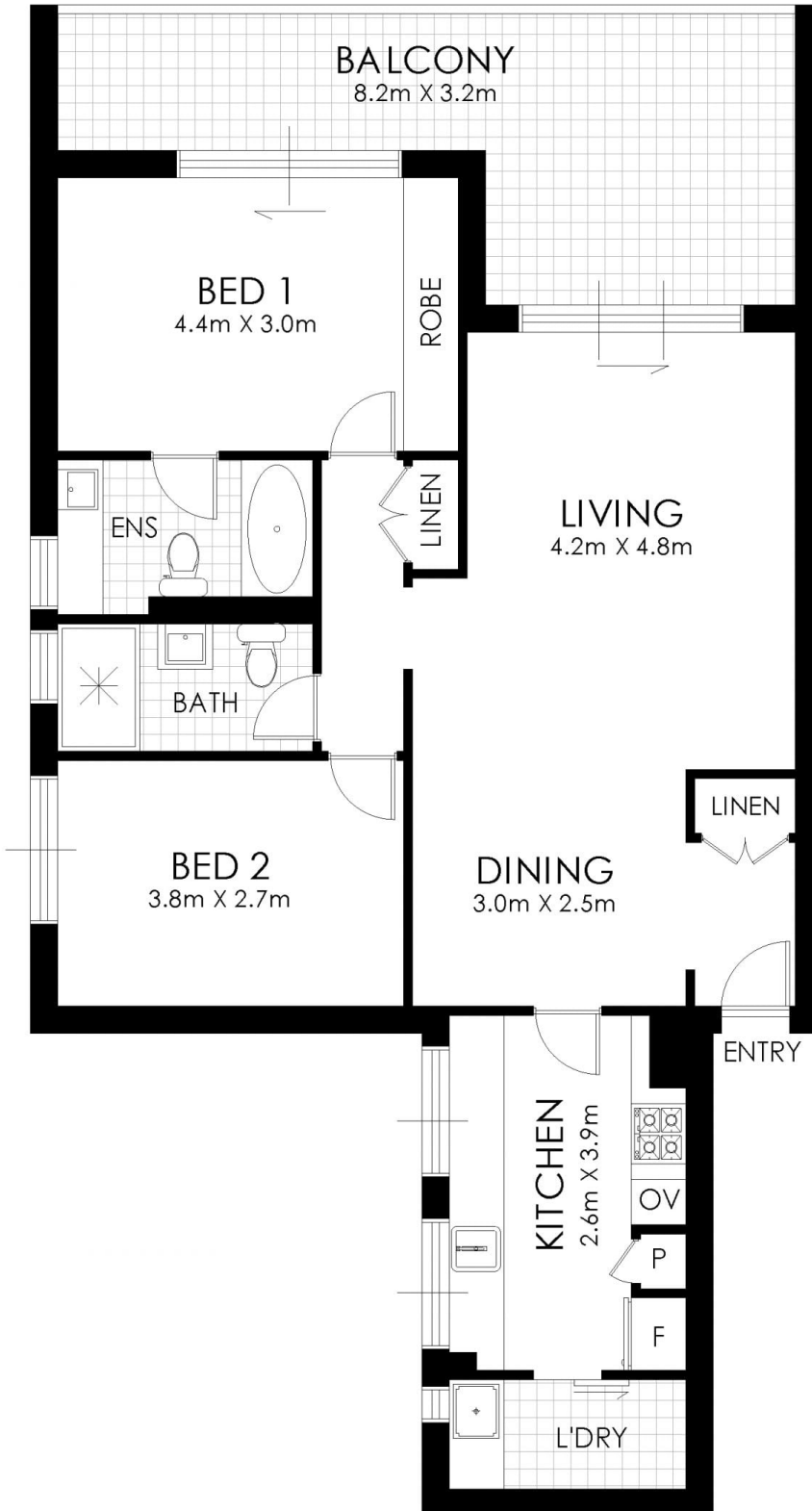


Junianto Lianto
 02 8357 3377



Qiqi Huang
 02 8357 3377

[For full version visit the website](https://www.recoproperty.com.au)



13/16 Leichhardt Street, Glebe

Disclaimer: Floor Plan measurements are approximate and are for illustrative purposes only. While we do not doubt the floor plans accuracy, we make no guarantee, warranty or representation as to the accuracy and completeness of the floor plan. You or your advisors should conduct a careful, independent investigation of the property to determine to your satisfaction as to the suitability of the property for your space requirements.